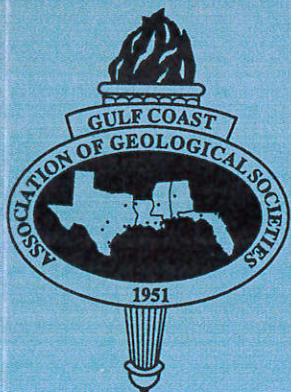
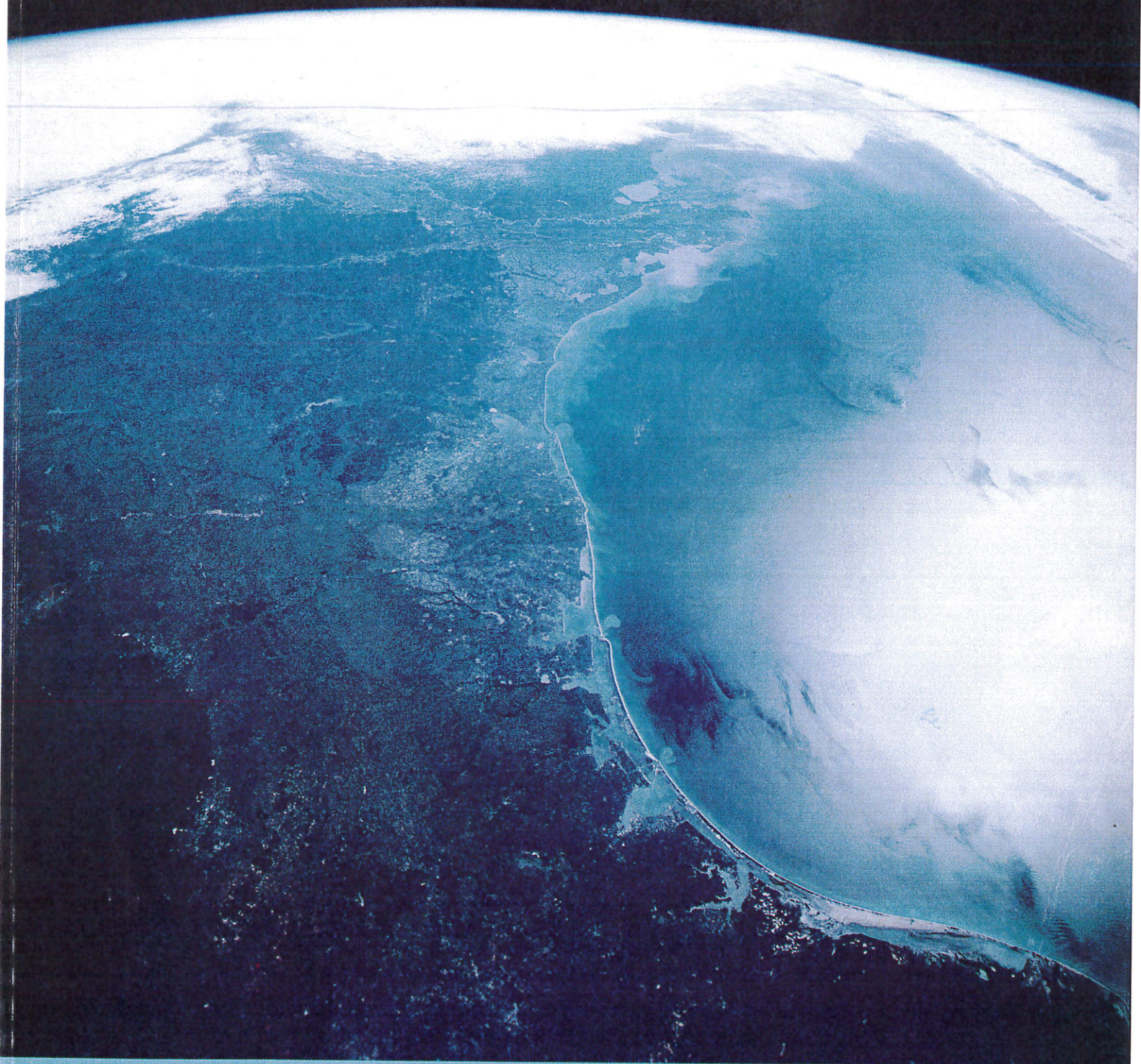
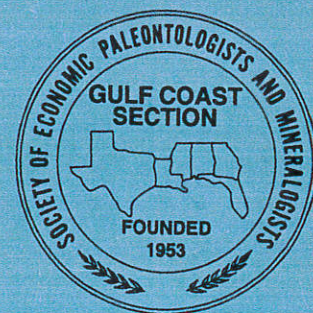


Gulf Coast Association of Geological Societies



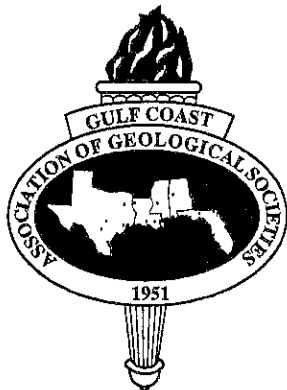
Transactions of the 44th Annual Convention Austin, Texas • October 5-7, 1994



Transactions

Gulf Coast Association of Geological Societies

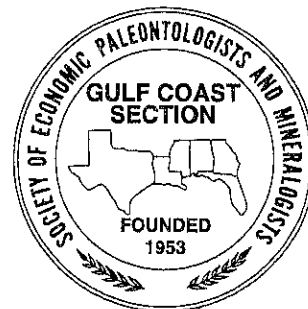
A Section of the American Association of Petroleum Geologists



Volume XLIV

1994

R. P. Major
Editor



Associate Editors

Alan R. Dutton

Robert A. Morton

William M. Fitchen

Hilary C. Olson

Douglas Hall

Stephen C. Ruppel

Tucker F. Hentz

John M. Sharp

Martin B. Lagoe

Bruce N. Turbeville

Lee E. McRae

Charles M. Woodruff, Jr.

Susann V. Doenges

Managing Editor

Prepared for

the Forty-Fourth Annual Convention of the

Gulf Coast Association of Geological Societies
American Association of Petroleum Geologists Regional Meeting

and

the Forty-First Annual Convention of the

Gulf Coast Section of the Society of Economic Paleontologists and Mineralogists

in

Austin, Texas

October 5-7, 1994

Copyright 1994 by the Gulf Coast Association of Geological Societies

No reproduction without permission of the President of GCAGS

Cover Photographs

Front Cover: View east across U.S. Gulf Coast taken from the space shuttle *Challenger* at an altitude of 269 nautical miles by Commander Robert L. Crippen on April 9, 1984. San Antonio (near bottom), Austin, and Waco lie along the sharp color boundary marking the Balcones fault line. Florida lies under a line of thunderstorms. Wave-dominated Rio Grande delta (bottom right), Brazos–Colorado River delta (center), muddy plume from Atchafalaya River, and river-dominated Mississippi River delta (top center) are clearly visible (NASA S13-51-2416).

Back Cover: Photograph of Africa and Antarctica taken by Harrison H. Schmitt aboard *Apollo 17* on December 9, 1972, en route to the Moon and approximately 100,000 miles from Earth. Note sharp boundary between desert and tropical-equatorial climate zones. Pictures of Earth taken from *Apollo* spacecraft first clearly showed that Earth is a unique, closed system on which all life is dependent for sustenance (NASA AS17-148-22774).

See p. 39 (Appendix) for information on ordering space shuttle photographs.

Dedication of 1994 *Transactions* to Don R. Boyd

It is with genuine pleasure that the Convention Committee of the Austin Geological Society dedicates the *Transactions* of the Forty-Fourth Annual Convention of the Gulf Coast Association of Geological Societies to Don R. Boyd, recognizing his many and lasting contributions to the geological profession, to the petroleum industry, and to the GCAGS.

Don Boyd is a complete geologist: he has contributed, with distinction, to the science of geology; he has successfully and gainfully practiced geology; and he has assiduously supported and promoted geology as a profession. He gives of his resources and energy with unqualified commitment.

Don was born in Tyler, Texas, in 1934, where he grew up and went to school. His parents were people of strong moral and religious conviction. They passed that fiber on to Don, and it has stood him well. Don received his B.S. degree in geology from the University of Texas in 1958 and his M.S. from Louisiana State University in 1959 and is a treasured graduate of both institutions.

Don began his career in Corpus Christi with Pan American Petroleum. He had done his thesis fieldwork in Mexico under Grover Murray and supported by a Natural Science Foundation grant, with additional field support from Pemex, and his time there served him well. At the peak of the Edwards reef exploration, while still with Pan American, Don and another Pan Am geologist, Charlie Brown, at Pemex's invitation went to the Tampico and Poza Rica areas and studied both outcrops and well samples. Pemex also graciously made available all of their geological and seismic interpretations of the area. Upon returning, Boyd and Brown coauthored a company report on the El Abra Formation, the producing formation of the famous Golden Lane oil fields. They presented the concept that the Golden Lane was an atoll, making it different from the South Texas Edwards. Don later published a paper on this work and took some

heat on the atoll theory until subsequent extension drilling proved it correct.

A couple of years later, Don received a call from a Pemex friend that Pemex had a well blowing out in the Zuloaga Formation. Don and Charlie Brown went to Monterrey, ran samples on the blowout well, and studied the Zuloaga outcrops. With their work, they were able to tie the Zuloaga and the East Texas Smackover together and to launch Pan American's South Texas Deep Smackover play. While this play was not an economic success, it was the first major effort to extend the Smackover trend into South Texas.



From 1962 through 1966, Don worked for Texas Eastern Transmission Corporation in their Corpus Christi exploration office. It was during this period that I first met Don, when he and Byron Dyer were putting together their classic paper on the Frio, in which they documented that the South Texas Frio constituted a major barrier bar depositional system. It won a Best Paper Award at the 1964 GCAGS meeting in Corpus Christi. That paper was an inspiration to scores of us, at UT and elsewhere, as we

worked to extend the critical concept of depositional systems. As with the Golden Lane Atoll and the South Texas Deep Smackover, Don Boyd, the scientist, was again ahead of his time.

In 1966, Don became an independent geologist on retainer to Edwin Allday. When Mr. Allday scaled back his operation after the major discovery of the Angelina field, Don went with one of Allday's investors, W. L. (Lee) Sinclair. The Boyd-Sinclair relationship was a very successful one that lasted until Sinclair's death in 1978.

In Don Boyd's exploration career, East Seven Sisters must be near the top. The discovery of the deep Wilcox production at East Seven Sisters field in Duval County by ARCO was made on acreage that Boyd and Sinclair had farmed out to ARCO. This deep production is the

only significant gas production (or oil) found below 15,000 feet in South Texas. Discovered in 1980 during that period when deep, deregulated gas was commanding high prices, it had individual wells that produced at rates from 20,000 to 30,000 Mcf per day over sustained periods. Don had realized for years that a deep structure was present on their HBP leases (originally drilled and completed in Wilcox sands at 9,500 to 10,000 feet), and he personally negotiated the farmout with ARCO, wherein the Boyd-Sinclair interests and their partners retained a fifty-percent back-in after the initial well paid out. Six deep wells were drilled on their lease—the discovery well had 446 feet of net gas pay in sixteen separate reservoirs from 11,500 to 15,300 feet. The main field pay had more than 108 feet of net gas pay (230 feet of gross pay sand) in a massive sand at 15,060 to 15,290 feet. It is a great story, one that makes the heart beat fast. The most exciting geological talk I ever heard was an extemporaneous one by Don (the scheduled speaker did not show) on East Seven Sisters given to the Corpus Christi Geological Society back in 1983.

After Lee Sinclair's death, Don spent a couple of years as Manager of Exploration for Edwin L. and Berry R. Cox in their Corpus Christi offices. But always the explorer looking for big challenges, Don linked up with Ken Martin during the peak of the deep Tuscaloosa play in South Louisiana; he maintained his offices and residence in Corpus Christi and commuted to New Orleans. But the lure of South Texas never faded, and by 1981, Don was back full time in Corpus Christi as President and Chief Operating Officer of a number of oil and gas interests owned by B. K. Johnson of San Antonio. Since 1985, Don has been an independent geologist and businessman involved in various oil and gas related business activities; he still participates in exploration ventures and, in addition, spends considerable efforts on oil and gas production sales. A company of his, Texan Drilling Company, is structured to buy and sell drilling rigs and associated equipment.

Don Boyd supports the institutions about him—the universities that trained him, the church that holds his faith, and the professional societies, local, regional, and national, that share his interests—with his time, energy, resources, and counsel. Nowhere is this more evident than at GCAGS; a list of Don's activities in the Association over the past thirty-odd years reads like a history of GCAGS itself.

Don attended his first meeting of GCAGS in San Antonio in 1961. Upon returning, he made up his mind that even if his company would not send him in the future, he would go on his own. True to himself, he has attended all but four meetings of the last thirty-three, and these four misses were due to absolutely unavoidable conflicts. In short order, Don was actively

involved in the Association. In 1964, he was appointed to the just-organized Special Projects Committee, chaired by Lee Meltzer. Don continued on that important committee, assuming the Chair in 1971. The name of the Committee was changed in 1977 to the Long-Range Project Committee (and more recently to the Long-Range Planning Committee), and Don continued to serve through 1981. From this Committee has come support for several important publications and sound counsel to governing executive committees.

The bibliographies of *Transactions* papers and of Gulf Coast geology, which we all use constantly, got their origination and support from the Committee. The *Tectonic Map of the Gulf Coast Region U.S.A.* owes its origin to the Committee, reaching fruition in 1972. Don, as Chair of the Special Projects Committee and also Vice President of the Association in 1971, handled most of the negotiations with AAPG as they became a partner in the final editing, drafting, printing, and distribution of the map.

In 1977, the Committee recommended the Association establish a Finance Committee, and it was established consisting of Bill Tucker, Chairman, along with Lee Meltzer and Don Boyd. They put together a financial structure that has served the Association well to this day.

The Scholarship Fund, which now functions as the Financial Aid to Students Committee, was initiated by the Long-Range Project Committee. The Fund, to support student research at Gulf Coast universities, has not only rewarded the work of meritorious students, but it has also advanced our knowledge of Gulf Coast geology.

While President of the Association in 1972, Don launched and handled the first substantial review of the GCAGS Constitution and Bylaws, and in 1977 President Boyer appointed Don as Chairman of the Committee to further review the Bylaws to accommodate the establishment of the Finance Committee.

In 1974, the GCAGS Executive Committee asked Don to serve as the Gulf Coast Section's representative to the Advisory Council of AAPG. Don's service on the Advisory Council was only one part of an illustrious history of service to AAPG that included a term as Secretary and twice being a candidate for President. The AAPG has, quite appropriately, honored Don with its Distinguished Service Award and election to Honorary Membership.

For GCAGS, Don has always been there in times of crisis. In 1978 Cambe indicated they would no longer handle GCAGS publications. Don personally asked Bob Boyer to consider taking on the job. Out of this, Earth Enterprises, Inc., came into being, and Bob has been the mainstay of GCAGS publications ever since.

Don Boyd has been an active player at turning points in the history of GCAGS. Don recalls that one of

the most memorable meetings he ever attended was a mid-year meeting in 1967 called by President Wilford Stapp to consider whether GCAGS should affiliate with AAPG. Don was there representing the Corpus Christi Geological Society and reports that he had never seen a meeting with such tension. The atmosphere was absolutely charged as the merits of affiliation versus autonomy were heatedly debated. Don voted for affiliation, which finally passed. The record will show that affiliation was to be to the lasting credit of both associations.

Since 1991, the GCAGS has given an Outstanding Educator Award to those truly exceptional college and university faculty whose work has benefited the geological profession and the Association. The creation of this award came directly from a proposal by Don to the Executive Committee. Don had the inspiration for the award after attending an Eastern Section meeting of AAPG in 1990 and observing their recognition of educators. Don knows a good show when he sees one.

Don Boyd is a proud family man. His high school sweetheart, Patricia Kidd, has been his wife and steadfast companion for thirty-six years. Their children, Melissa, David, and Michael, and grandchildren, Emily Patricia Boyd and Andrew Boyd Johnson, are an obvious source of pride to both.

Don Boyd is a natural leader, a truly out-front guy. His successes and distinctions are the product of intelligence, energy, timing, and courage, along with a genuine sensitivity to those around him. He sincerely works without thought of recognition or honor because he thoroughly enjoys being involved and doing his part to better the profession for those who follow. Perhaps, because Don has not sought recognition and honor, he has received both in merited abundance—from his universities and from his professional societies, including GCAGS.

In GCAGS, Don has served as President and long-time committee member and committee chair. In 1981, Don was a member of the first class of individuals elected to Honorary Membership in the Association, with the likes of Meltzer, Braunstein, Hickey, Harrison, and Halbouty—an impressive bunch among whom Don Boyd stood tall. And finally the dedication of this *Transactions* volume rounds out our simple, but profound, thanks to a man who has given so much and from whom we have all benefited and will continue to do so far into the future.

This *Transactions* volume is dedicated to Don R. Boyd for distinction in the science of geology and the practice of petroleum geology, for dedicated, unselfish leadership, for valued counsel, and for unstinting commitment to the institutions of which he is a part.

William L. Fisher

V I

Sponsors of the Forty-Fourth Annual Convention of the Gulf Coast Association of Geological Societies

The Gulf Coast Association of Geological Societies gratefully acknowledges the support for its Forty-Fourth Annual Convention provided by the companies listed below. Their generous contributions have permitted the Austin Geological Society to host a full agenda of technical sessions, sporting events, and social functions, thereby assuring a successful GCAGS Convention. The cost of printing the *Transactions* was partly defrayed by donations from Union Pacific Resources Company and Nippon Oil Exploration.

Robert E. Boyer
Chairman, Development Committee

Diamond Sponsor

Schlumberger Well Services

Platinum Sponsors

Freeport-McMoRan
Mobil Exploration and Producing U.S. Inc.
Phillips Petroleum Company

Gold Sponsors

Apache Corporation
Diamond Shamrock, Inc.
Pennzoil Exploration and Production Company
POGO Producing Company
Texas Crude Energy, Inc.
Union Pacific Resources Company
Vastar Resources, Inc.

Silver Sponsors

Chevron
Halliburton Energy Services
Marathon Oil Company
Mitchell Energy
Nippon Oil Exploration U.S.A. Limited
Norcen Explorer, Inc.
Radian Corporation
Shell Oil Company
Texaco, E&P Technology Division
The Louisiana Land and Exploration Company

Bronze Sponsors

BFI Waste Systems
Conoco, Inc., Exploration
Conoco, Inc., Finding Functional Excellence
Dawson Geophysical Company
Espy, Huston & Associates, Inc.
Geo Projects International, Inc.
Geosource, Inc.
Groundwater Technology, Inc.
R. W. Harden and Associates, Inc.
IP Petroleum Company, Inc.
Sidney Schafer and Associates, Inc.
Terra Dynamics, Inc.
Union Texas Petroleum
Unocal Corporation, Energy Resources Division

VIII

Contents

Dedication	iii	1993 A. I. Levorsen Memorial Award	xxxii
Sponsors	vii	1993 Best Paper Awards, GCAGS	xxxii
Report of the President, GCAGS	xvii	Past Recipients, Best Paper Awards and A. I. Levorsen Memorial Awards, GCAGS	xxxv
Report of the President, GCSSEPM	xviii	1993 Best Poster Awards, GCAGS	xxxvii
Report of the General Chairman	xix	1993 Best Core Presentation Award, GCAGS	xxxviii
Report of the Program Chairman	xx	1993 Best Published Paper Awards, GCSSEPM	xxxviii
Report of the Editor	xx	Past Recipients, Best Paper Awards, GCSSEPM	xli
Distinguished Service Award, GCAGS	xxi	Officers and Committees, Forty-Fourth Annual Convention—1994	xliii
Distinguished Service Award, GCSSEPM	xxii	Board of Directors, GCAGS	xliv
Past Recipients, Distinguished Service Awards, GCAGS	xxiii	Officers of Member Societies, GCAGS	xlvi
Past Recipients, Distinguished Service Awards, GCSSEPM	xxiii	1993 Executive Council, GCSSEPM	xlvi
Honorary Membership, GCAGS	xxiv	Standing Committees, GCAGS	xlvi
Past Recipients, Honorary Membership, GCAGS	xxvi	1994 Financial Aid to Students, GCAGS	xlvi
Honorary Membership, GCSSEPM	xxvii	Past Officers and Convention Chairmen, GCAGS	xlix
Past Recipient, Distinguished Honorary Membership, GCSSEPM	xxviii	Past Officers, GCSSEPM	l
Past Recipients, Honorary Membership, GCSSEPM	xxviii	Bylaws, GCAGS	li
Special Commendation Award, GCAGS	xxix	Bylaws, GCSSEPM	liii
Outstanding Educator Award, GCAGS	xxx		

Keynote Addresses: Limitations of the Earth, Revisited

Rethinking Resources William L. Fisher	1
Geological Understanding and the Changing Environment Victor R. Baker	13
Oil and Water Do Mix Philip E. LaMoreaux	21
Effects of Man on the Earth: The View from the Space Shuttle William R. Muehlberger	29

Technical Papers

Sequence Stratigraphy of Plio-Pleistocene Sedimentary Rocks in North-Central Green Canyon and Western Ewing Bank, Northern Gulf of Mexico Zurilma Acosta and Paul Weimer	41
--	----

Tectonic Evolution, Structural Styles, and Oil Habitat in Campeche Sound, Mexico F. J. Angeles-Aquino, J. Reyes-Nuñez, J. M. Quezada-Muñetón, and J. J. Meneses-Rocha	53
Classification and Analysis of Palynomorphs of the Aguja Formation (Campanian), Big Bend National Park, Brewster County, Texas Nina L. Baghai	63
Resource Optimization through Characterization of Downdip Frio Shoreface/Shelf Sandstone Reservoirs: Red Fish Bay Field, South Texas R. J. Barnaby, R. Ramamoorthy, and M. H. Holtz	71
Determination of Natural Radioactivity in Wilcox Lignite (Eocene), Eastern Texas Pierrepont M. Bartow and E. B. Ledger	79
Glacio-Eustatic and Climatic Controls on Quaternary Alluvial Plain Deposition, Texas Coastal Plain Michael D. Blum and David M. Price	85
Reservoir Facies Architecture of Two Upper Point Bar Ridge Deposits Arnold H. Bouma and Lars O. Bouma	93
Growth-Fault Evolution in Offshore Texas Barry E. Bradshaw and Joel S. Watkins	103
Biostratigraphy and Paleoecologic Tolerances of Oligocene through Paleocene Foraminiferal Assemblages of the Gulf Coast Basin S. Q. Breard, M. J. Nault, and A. D. Callender	111
Petrology, Stratigraphy, and Depositional History of the Upper Triassic-Lower Jurassic Eagle Mills Formation, Choctaw County, Alabama Donald E. Burch, Jr. and A. E. Weidie	117
Use of Sequence Stratigraphy in Hydrocarbon Prospecting: An Example from the Green Canyon Area, Offshore Louisiana Abu N. Chowdhury, David L. Risch, and Andrew E. Hannan	119
Geology of the Balcones Fault Zone along the Growth Corridor of San Antonio, Boerne, Wimberley, and New Braunfels, South-Central Texas Edward W. Collins	125
Petrography and Petrology of the Wilds Sand, Wildsville Field, Concordia Parish, Louisiana Maureen K. Corcoran, Danny W. Harrelson, and Gary W. Hennington	127
Basement Motion and Sediment Loading: A Quantitative Study in Northern Louisiana, Gulf of Mexico I. Csato, S. Cao, K. Petersen, I. Lerche, N. Sullivan, and A. Lowrie	133
Lithofacies Evolution from Transgressive to Highstand Systems Tracts, Holocene of the Alabama Coastal Zone David J. Davies and Richard L. Hummell	145
Biogenic Mounds and Associated Trace Fossils: Wolfe City Formation (Upper Cretaceous), North-Central Texas William C. Dawson and Donald F. Reaser	155
Petrography and Geochemistry of Vein-Filling Calcites, Balcones Fault Zone, Upper Cretaceous Strata, North-Central Texas William C. Dawson, Halina M. Szymczyk, and Donald F. Reaser	161
Seismic Facies and Variations in Channel Evolution, Eastern Mississippi Fan (Pleistocene), Northeastern Deep Gulf of Mexico Barrett T. Dixon and Paul Weimer	167
Radon in the Gulf Coast Area: Potential Problem or Exaggerated Risk? Timothy W. Duex	177

Use of Aquifer Stratigraphy for Building Numerical Models of Ground-Water Flow: Case Study of the Heterogeneous Gulf Coast Aquifer in Matagorda and Wharton Counties, Texas	185
Alan R. Dutton	
An Integrated Geochemical and Geological Approach for Determining Hydrocarbon Generation-Migration Patterns: Central Gulf Coast Basin	193
J. B. Echols, R. K. Zimmerman, and D. A. Goddard	
Enhancing Sandstone Reservoir Prediction by Mapping Erosion Surfaces, Lower Miocene Deltas, Southwest Louisiana, Gulf Coast Basin	205
Marc B. Edwards	
Controls on the Deposition of Bedded Halite within the Haynesville Formation, Champion-Klepac No. 1 Core, Southwestern Alabama	217
Rachel A. Eustice and Lynton S. Land	
The Cook Mountain Problem: Stratigraphic Reality and Semantic Confusion	225
Thomas E. Ewing	
Surface to Subsurface Correlation of the Claiborne and Jackson Groups, Colorado River to Trinity River	233
Thomas E. Ewing	
Some Considerations in the Application of Wireline Logging to Environmental Investigations	237
Bruce E. Gaither	
A Regional Subsurface Study of the Expanded Yegua Formation in the Houston Diapir Province	245
Richard E. Goings and Richard Smosna	
Apartments, City Parks, and Landfills—Can They Coexist?	255
Michael H. Green, Michael Macicak, and Michael R. Curtis	
Environmental Challenge as a Geologist	265
Bernold M. Hanson	
Dynamic Depositional and Early Diagenetic Processes in a Deep-Water Shelf Setting, Upper Cretaceous Austin Chalk, North Texas	269
S. D. Hovorka and H. S. Nance	
Sedimentologic and Diagenetic Controls on Aquifer Properties, Lower Cretaceous Edwards Carbonate Aquifer, Texas: Implications for Aquifer Management	277
S. D. Hovorka, A. R. Dutton, S. C. Ruppel, and Joseph Yeh	
Geologic Controls on Elevated Salinity in the Mississippi River Alluvial Aquifer of Eastern Morehouse Parish, Louisiana, and Southern Chicot County, Arkansas	285
G. F. Huff	
Upper Cretaceous (Austin Group) Volcanic Deposits as a Hydrocarbon Trap	293
Peter J. Hutchinson	
Erosion and Deposition in Northern Gulf of Mexico Estuaries	305
Wayne C. Isphording	
Upper Cretaceous Marine Depositional Sequences in Alabama and Their Probable Correlation with the Western Interior Seaway	315
David T. King, Jr.	
Parasequence-Bounding Sandy Event Beds, Upper Cretaceous, Alabama	321
David T. King, Jr. and Michael C. Skotnicki	
Shallow Seismic Survey on Weeks Island, Louisiana . . . an Attempt to Define "Top of Salt"	327
G. L. Kinsland and A. W. Rutter III	

Architecture, Internal Heterogeneity, and Resulting Drainage Efficiency of Upper Oligocene Frio Formation Inner-Shelf Sandstone Reservoirs in West Fulton Beach Field, Aransas County, Texas	
Paul R. Knox	337
Oncoids to Reefs: Rolling Stones Come to Rest in the Smackover Formation	
David C. Kopaska-Merkel	347
Bathymetric Zonation and Relationship to Sea-Bed Environments of Modern Benthic Foraminiferal Biofacies, Northwestern Gulf of Mexico Slope	
Martin B. Lagoe, Anthony C. Gary, Sarah Zellers, Benjamin Sloan, Paula Noble, and Ron Johns	355
Accumulation and Trace-Metal Variability of Estuarine Sediments, Barataria Basin, Louisiana	
Kenneth E. Landrum	365
Seafloor Acoustic Backscatter on the Mississippi-Alabama Outer Continental Shelf	
J. Scott Laswell, William W. Schroeder, and William W. Sager	373
The Carrizo Aquifer of Smith County, East Texas	
Jeff Lauman	381
Lithostratigraphy and Petrology of Neogene and Pleistocene Sedimentary Rocks, South-Central Mississippi	
Zebao Li and Maurice A. Meylan	388
Sequence Stratigraphic Elements and Geochemical Variability within a "Condensed Section": Eagle Ford Group, East-Central Texas	
Louis M. Liro, William C. Dawson, Barry J. Katz, and Vaughn D. Robison	393
Calcareous Nannofossil Biostratigraphy of the Taylor Group (Campanian) of North-Central Texas	
Kathleen A. Locke and Stefan Gartner	403
Water-Level Declines in the Woodbine, Paluxy, and Trinity Aquifers of North-Central Texas	
Robert E. Mace, Alan R. Dutton, and H. Seay Nance	413
Paleoenvironments of the Tombigbee Sand Member of the Eutaw Formation (Upper Cretaceous) of Eastern Mississippi and Western Alabama	
Ernest A. Mancini and David D. Soens	421
Claiborne-Jackson Group Contact (Eocene) in Alabama and Mississippi	
Ernest A. Mancini and Berry H. Tew	431
Offshore Environmental Risks, Perceptions and "Corrective" Legislation	
G. Rogge Marsh	441
Microtopography, Runoff Processes, Sediment Transport, and Their Implications for Land Use Planning in the Central Texas Hill Country	
William M. Marsh and Nina L. Marsh	447
Sequence Stratigraphy of Upper Pliocene and Pleistocene Sedimentary Rocks of Northwestern Green Canyon Area, Northern Gulf of Mexico	
Rafael E. Martinez and Paul Weimer	457
Carbonate Cements in Shallowly Buried Pleistocene and Holocene Sandstone and Limestone, South Texas Gulf Coast	
Earle F. McBride and Hiromi Honda	467
²²²Rn Levels in Kingsville, Texas, and Vicinity near an <i>In Situ</i> Uranium Mine	
Thomas Lee McGehee, M. Rochelle Martino, Thomas Lee Harr, and Anthony Samudio	477
Integrated Reservoir Characterization of Mature Oil Reservoirs: An Example from Oligocene Frio Fluvial-Deltaic Sandstones, Rincon Field, South Texas	
Lee E. McRae and Mark H. Holtz	487

Hydrogeological Concept of Vertical Coupling in a Freshwater Lens Hugh J. Mitchell-Tapping	499
Jurassic and Triassic Hydrocarbon Exploration of Southern Florida Hugh J. Mitchell-Tapping	507
Current and Proposed Regulations for Salt-Water Disposal Wells Terry Moody	515
Fault and Joint Measurements in Austin Chalk, Superconducting Super Collider Site, Texas H. S. Nance, S. E. Laubach, and A. R. Dutton	521
Bubble Characteristics in Gassy Sediments Thomas H. Orsi and Aubrey L. Anderson	533
Mississippi's Revised Neogene Stratigraphy in Northern Gulf Context Ervin G. Otvos	541
Cycles and Stacking Patterns in Carboniferous Rocks of the Black Warrior Foreland Basin Jack C. Pashin	555
Thermal Anomalies in Sediments near Evolving Salt Structures: Importance for Modeling the Timing of Oil Generation K. Petersen and I. Lerche	565
Timing of Fracturing of Sedimentary Beds around Evolving Salt Shapes: Self-Consistent Behaviors and Coulomb's Criterion K. Petersen and I. Lerche	573
Mesozoic Stratigraphy of Near Shelf-Edge Deposits, Southern Mississippi, Adjacent State and Federal Waters Andrew J. Petty, Stan Thieling, and Tony Friedmann	583
Planktonic Foraminiferal and Ostracode Biostratigraphy of Upper Santonian through Lower Maastrichtian Strata in Central Alabama T. Markham Puckett	585
Discordant Austin-Taylor Contact, Upper Cretaceous, Southern Ellis County, Texas Donald F. Reaser and William C. Dawson	597
Reservoir Property Changes Caused by Thermochemical Sulfate Reduction in the Smackover Formation John A. Rhodes	605
Regional Depositional History of the Miocene-Pleistocene Louisiana Slope, Green Canyon-Mississippi Canyon David L. Risch, Abu N. Chowdhury, and Andrew E. Hannan	611
Subsidence in the Mississippi River Delta—Important Influences of Valley Filling by Cyclic Deposition, Primary Consolidation Phenomena, and Early Diagenesis Harry H. Roberts, Alan Bailey, and Gerald J. Kuecher	619
Subsurface Planktonic Zonation of the Paleogene of Texas and Louisiana Gulf Coast and Its Relationship to Relative Changes of Coastal Onlap Rashel N. Rosen, Bruce E. Bowen, and Kenneth J. Thies	631
Three-Dimensional Geometry and Evolution of a Composite, Multilevel Salt System, Western Eugene Island, Offshore Louisiana Mark G. Rowan, Paul Weimer, and Peter B. Flemings	641
Tonsteins and Clay-Rich Layers in Coal-Bearing Intervals of the Eocene Manning Formation, East-Central Texas Leslie F. Ruppert, Peter D. Warwick, Sharon S. Crowley, and James Pontolillo	649
Synergetic Catalysis in Hydrocarbon Generation Robert W. Sabaté and Claude C. Baker	657

Reservoir Characterization and Preliminary Modeling of Deltaic Facies, Lower Wilcox, Concordia Parish, Louisiana Philip Schenewerk, Donald Goddard, and John Echols	663
Fossil Vertebrates from the Castor Creek Member, Fleming Formation, Western Louisiana Judith A. Schiebout	675
Scope and Construction of a Gas and Oil Atlas Series of the Gulf of Mexico: Examples from Texas Offshore Lower Miocene Plays Steven J. Seni, Bruce A. Desselle, and Allan Standen	681
Deep-Water Sandstones of the Pennsylvanian Jackfork Group, Ouachita Mountains: A Debris-Flow- and Slump-Dominated Slope System G. Shanmugam and R. J. Moiola	691
Depositional Patterns and Structural Styles—Hackberry Salt Dome, Cameron Parish, Louisiana J. A. Spencer, C. L. Sharpe, T. H. Gillham, and D. N. Wright	701
Late Holocene Foraminiferal Biofacies from Baffin Bay, Texas: Preliminary Analysis of a 4,000-Year Record of Paleosalinity Laura Stewart, Martin B. Lagoe, and E. William Behrens	709
Genetic Variations in a Growth-Fault System: Downdip Wilcox Trend of South Texas Fred L. Stricklin, Jr.	717
Holocene Stability of the Gulf of Mexico Coast from Beach Ridges William F. Tanner	721
Source Rock in the Lower Tertiary and Cretaceous, Deep-Water Gulf of Mexico Bruce E. Wagner, Zvi Sofer, and Brenda L. Claxton	729
Reclamation of Saltwater-Contaminated Soil in Big Lake Field Michael L. "Doc" Weathers, Kenneth R. Moore, Donald L. Ford, and Charles K. Curlee	737
Plio-Pleistocene Structural Characteristics of Central Offshore Louisiana with Emphasis on Growth-Fault Interplay with Salt Tectonics, Gulf of Mexico Jie Zhang and Joel S. Watkins	745

Abstracts

Scanning Electron Microscope Examination of Shale in Core from the Frio Formation, Brazoria County, Texas P. D. Alley-McReynolds	755
Near-Surface Sand Resources of the East Texas Shelf John B. Anderson, Fernando Siringan, Kenneth Abdullah, Michael Hamilton, and Sabrina Sarzalejo	755
Surface and Subsurface Features of the Upper Pleistocene Beaumont Formation as Studied in a Proposed Super Collider Site in Liberty and Hardin Counties, Southeastern Texas Saul Aronow	756
Offshore Development and the Marine Environment—Emerging Environmental Issues in the Outer Continental Shelf Debra K. Beaubien and Robert J. Moran	756
Jurassic Beach: A Depositional Facies Model for Smackover Stratigraphic Traps in the Ark-La-Tex Tim Brown, Lawrence Bruno, and Mike Green	757
Statistical Characteristics of Gassy Sedimentary Rocks in the Northwestern Gulf of Mexico William R. Bryant, Aubrey L. Anderson, and Thomas H. Orsi	757

Sedimentology and Permeability Architecture of Atokan Valley-Fill Natural Gas Reservoirs, Boonsville Field, North-Central Texas Mark J. Burn, David L. Carr, and John Stuede	758
Differences in the Stratigraphic Framework of the Frio and Anahuac Formations in the Louisiana and Texas Gulf Coast Basin Bruce A. Desselle	758
The Use of Risk Analysis and Strategic Classification to Manage Exploration Portfolios Laura Kay Ethetton	759
Post-Mid-Cretaceous Seismic Stratigraphy and Depositional History, Deep Gulf of Mexico Basin Jianhua Feng and Richard T. Buffler	759
Recognition, Correlation, and Hierarchical Stacking Patterns of Cycles in the Ferry Lake-Upper Glen Rose, East Texas Basin: Implications for Grainstone Reservoir Distribution W. M. Fitchen, D. G. Bebout, and C. L. Hoffman	760
3-D Seismic Delineation and Geologic Explanation of Channelization in the Frio Formation of Javelina/East McCook Field, Hidalgo County, Texas John L. Gibson	760
Kinematic and Sequence Stratigraphic Frameworks of the Gulf of Mexico and the Niger Delta: Contrasts and Analogs David J. Hall and Bruce E. Bowen	761
Tectonostratigraphic Reconstruction and Lithofacies Distribution of Tertiary Slope Sedimentary Rocks in the Western Mississippi Canyon Area Andrew E. Hannan, David L. Risch, and Abu N. Chowdhury	761
Hydrochemistry of the Falls City Uranium Mine Tailings Remedial Action Project, Karnes County, Texas Timothy J. Jackson and Charles W. Kreitler	762
Middle Eocene through Basal Miocene Sequence Biostratigraphy of the Western Gulf Coast Region Mark M. Jiang	762
Stratigraphic Variations of Incised-Valley Fill Controlled by Rates of Sea-Level Change Jack L. Kindinger, Peter S. Balson, and James G. Flocks	763
Morphology and Stratigraphy of Middle to Late Pleistocene Shelf Submarine Canyons, Central Offshore Louisiana Thomas M. Kirkpatrick	763
Haynesville Sandstone Reservoirs in the Updip Jurassic Trend of Alabama Ralph L. Kugler and Robert M. Mink	764
Comprehensive, Quantitative Micropaleontological Analysis as a Tool for Paleoenvironmental Interpretation and Sequence Stratigraphy, with an Example from the Yegua Formation, Southeast Texas Martin B. Lagoe and Thomas B. Layman	764
Seismic Polarity Reversals in Higher Impedance Gas Sandstones W. R. Landwer and N. S. Neidell	765
A Current Review of Registration of Geologists and Geophysicists in California Robert G. Lindblom and John G. Parrish	765
Hierarchical Arranging of Geologic Processes as Related to Passive Continental Margin Evolution Allen Lowrie and Sylvia Ann Cureau	766
Paleoenvironments of Deposition and Salt Location from Paleotectonic Restorations, Seismic Reflection Data, and Simulations across Mississippi Embayment—Gulf of Mexico Allen Lowrie, Karen Hoffman, Michael A. Fogarty, Christopher G. St. C. Kendall, and Don Hicky	766

Missing Stratigraphic Sections in Tertiary Sandstone Reservoirs of the Gulf Coast: Faults or Unconformities and Implications for Development Strategies	
R. P. Major and R. Dean Johnstone	767
Depositional Environment of the Downdip Queen City (Eocene) Sandstone, Mestena Grande Field Area, Jim Hogg and Duval Counties, Texas	
Jeffrey McCormack	767
Formation of High-Frequency Sequences and Their Bounding Surfaces in a Paleogene Supply-Dominated System, Texas Gulf Coast, USA	
L. D. Meckel III and W. E. Galloway	768
Bioremediation as an Efficient Method to Degrade Creosote and Improve Groundwater Quality	
Virginia Anne Newbern	768
Getting along with Reporters, Environmentalists, and Regulators: How to Get Your Company's Message on the Air	
Anne Pearson	769
Holocene Reef Development on the Belize Shelf	
William F. Precht	769
Financial Responsibility Requirement of the Oil Pollution Act of 1990	
William E. Pritchard III	770
Origin of High-Sulfur Oils, Gulf of Mexico Continental Slope	
Roger Sassen, A. G. Requejo, Tom McDonald, Mahlon Kennicutt II, and James Brooks	770
Impact of Offshore Exploratory Drilling: Is it Significant? You Be the Judge	
E. A. Shinn, B. H. Lidz, and C. D. Reich	771
Naturally Occurring Radioactive Material in the Oil and Gas Industry	
W. A. (Buck) Steingraber	771
Stimulation of Indigenous Microbes to Bioremediate Oil-Contaminated Soils	
James R. Stewart, Deborah L. Williams, Kimberly D. Kriel, Greg A. Stewart, and Robert C. Hulse	772
The Tallahala Creek Complex, Smith County, Mississippi: The Crest Is Not Always the Best	
Edwin E. Sticker	772
Structure, Stratigraphy, and Depositional Environment of the <i>Heterostegina</i> Limestone and Overlying Sandstones in the Lake Pontchartrain Area of Southeast Louisiana	
Spencer B. Street III and B. E. Lock	773
Targeted Infill Drilling at Stratton Field Using 3-D Seismic	
John R. Suydam and Dale T. Reitz	773
The Application of Geographic Information Systems Technology to Geologic, Hydrogeologic, and Environmental Research	
Berry H. Tew and G. D. Irvin	774
Recognition of Hardgrounds in Terrigenous Stratigraphic Sections: The Moseley Limestone (Middle Eocene, Southeast Texas)	
C. A. Thornton and R. J. Stanton, Jr.	774
Effects on Groundwater of an Ash-Disposal Operation at an East Texas Lignite Mine	
Keith A. Wheeler, Scott Mills, and J. V. Rouse	775
Subsalt Risk Reduction Using Seismic Sequence Stratigraphic Analysis	
Walter W. Wornardt, Jr.	775
Paleoclimatological Analysis of Upper Eocene Core, Manning Formation, Brazos County, Texas	
Thomas Yancey and William Elsik	776
Index of Advertisers	792

Report of the President

Gulf Coast Association of Geological Societies

William L. Fisher

Austin and the Austin Geological Society are pleased to host the Forty-Fourth Annual Convention of the Gulf Coast Association of Geological Societies. We are presenting some new themes as well as traditional ones, with the hope that you will find the meeting professionally rewarding and challenging.

This year's *Transactions* are dedicated to Don R. Boyd. Don has been a long-time, dedicated supporter of GCAGS and the geological profession and is most deserving of this honor.

Thanks to the foresight and dedication of many geologists in the leadership of GCAGS over the years, the Association is in good health. This is in spite of some unprecedented changes in the industry and our profession over the past decade. Upon recommendation of the Long-Range Planning Committee, headed by Lane Sartor, the GCAGS created a Convention Committee composed of four immediate past-convention chairmen and treasurers. It is the charge of that Committee to aid local host societies and to provide perspective, guidance, and continuity in the planning for our annual meetings. The Committee is chaired by Dan Smith.

Again this year, the Financial Aid to Students Committee, chaired by Ralph Richardson, made awards to thirteen students from Gulf Coast universities, and I thank Ralph and his committee for their efforts. I also



want to thank the other committees of the convention for their dedicated work during the year—Jerry Cooley and the Finance Committee, Bob Boyer and the Publications Committee, Bill Meaney and the Awards and Nominations Committee, Lane Sartor and the Long-Range Planning Committee, and our Historian, Dave Pope.

Birdena Schroeder continues to serve as Executive Secretary of the Association. Birdena has a world of background and experience with GCAGS, and since becoming Executive Secretary in 1989, has added immensely to the stability and continuity of the Association.

My personal thanks go to all who have worked so diligently to plan and organize the Forty-Fourth Annual Convention. General Chairman Pete Rose has done an outstanding job. The several committee chairs and the committees have worked unstintingly to make this convention a good and rewarding one. They are listed elsewhere in the *Transactions*. Shirley Dutton, Program Chairman, and Rick Major, *Transactions* Editor, did yeoman's service and worked many long hours to give a program and papers with lasting value.

We welcome you to Austin and trust you will enjoy the technical sessions, field trips, and short courses, and, of course, the many social events.



William E. Marsalis
Vice President



Shirley P. Dutton
Secretary



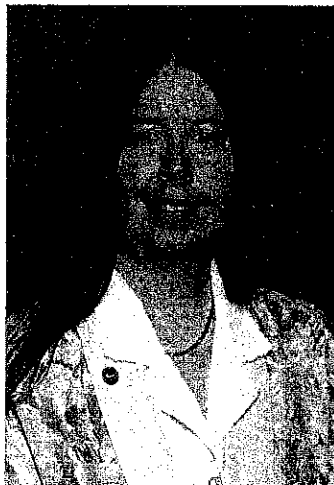
Carolyn Condon
Treasurer

Report of the President Gulf Coast Section SEPM

Nancy L. Engelhardt-Moore

Welcome to Austin and the Forty-Fourth Annual Gulf Coast Association of Geological Societies and Forty-First Annual Gulf Coast Section SEPM Convention hosted by the Austin Geological Society. This year's excellent technical program, whose theme is "Energy and Environment—Expanding Professional Horizons," has been supported by a dedicated GCSSEPM committee led by Earle McBride, Vice-Chairman, and the following members: Martin Lagoe, Program Chairman; Rick Major, Editor; and Michael Nault, Awards and Judging Chairman.

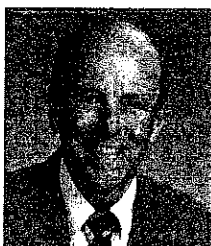
I have not worked the Gulf Coast since 1989, when my focus changed to international projects. This reflects a change in my company's emphasis from domestic to international exploration, which is typical of the changes in the way we do business, work, and think in the 1990's. Terms such as out-sourcing, downsizing, and reorganization are now a part of our everyday vocabulary. Change in itself is not necessarily bad. Rather, it presents a challenge to companies, organizations, and individuals to understand and adapt to change. Many U.S. companies have adapted by hiring professional management consultants to "streamline" operations, commonly in a standardized manner and at the expense of valuable technical staff and the advanced technologies they oversee. This practice has the tendency to diminish the individuality of companies with regard to their specialized people and technologies, and thereby to weaken their ability to respond to future change and to lose their competitive edge. In this time of change, successful individuals and companies will take calculated risks in accordance with a sound assessment of their strengths and weaknesses, and a clear understanding of their competitive edge. Success in the twenty-first century will undoubtedly be a function of creativity, innovation, flexibility, and adaptability. Such qualities will help individuals and companies not just to survive change, but to evolve, grow, and control their destinies.



With change ongoing, there is a challenge for organizations like the GCAGS and GCSSEPM to meet the evolving needs of the people they serve and to help them be successful. The GCSSEPM feels that its annual research conference and its joint convention with the GCAGS supply forums for technological exchange that are essential to growth and success in our changing world. This year's GCSSEPM research conference "Submarine Fans and Turbidite Systems—Sequence Stratigraphy, Reservoir Architecture and Production Characteristics—Gulf of Mexico and International" should be outstanding.

The meeting will be cochaired by Paul Weimer and Arnold Bouma. More than fifty oral papers and posters will be presented during the two-and-one-half day conference. Group luncheons and evening events are planned to encourage discussion and interaction among the participants. The conference will be held at the Adam's Mark Hotel in Houston, Texas, December 4–7, 1994. I encourage you to plan on attending this meeting.

As GCSSEPM President it has been my pleasure to work with the following dedicated officers: Charles C. Smith, President-Elect; Missy Jackson, Vice-President; Michael J. Styzen, Secretary; and Elaine H. Collison, Treasurer. The Foundation Trustees are Sheila Barnette, Denise Butler, and Art Waterman, and the Foundation Executive Director is Bob Perkins. This team, along with numerous other volunteers, has provided the support and direction that GCSSEPM needs to meet the challenges of our changing business environment. I look forward to continued participation in our society programs as I transfer leadership of the GCSSEPM to Charles Smith. I am confident that, with the dedication of people like those currently serving, the GCSSEPM will continue to provide quality programs and publications that aid the exploration and exploitation of resources in the Gulf Coast and worldwide.



Charles C. Smith
President-Elect



Mary (Missy) Jackson
Vice President



Michael J. Styzen
Secretary



Elaine H. Collison
Treasurer

Report of the General Chairman Forty-Fourth Annual Convention—1994

Peter R. Rose

On behalf of the Austin Geological Society, I want to welcome you to Austin and the Forty-Fourth Annual Convention of the Gulf Coast Association of Geological Societies. This year's theme is "Energy and Environment—Expanding Professional Horizons," reflecting the evolving professional and economic interaction between resource development and environmental protection. The occupational mix of Gulf Coast geoscientists is changing rapidly, and one of our goals for this convention was to bring the growing cadre of environmental geologists into the GCAGS family. So you will find a new component to the long-standing GCAGS/GCSSEPM technical program: environmental geology. We hope this will prove to be a welcome and permanent addition.

Our second goal was to make sure that the traditionally excellent GCAGS program on petroleum geology and technology was not compromised. We hope you will agree that this year's oil and gas technical program is diverse, current, interesting, and worthwhile—even more than in past years!

Our third goal was to make the convention *affordable*. Many of us feel that conventions are becoming overly expensive; accordingly, the Austin Geological Society resolved to manage this convention ourselves, without outside help. It has been a lot of work, but also a lot of fun, and all of us hope fervently that the final outcome will result in (1) a memorable

convention experience for you, (2) a long-overdue reduction in convention cost for you, and (3) a small but welcome profit for GCAGS (and AGS, too!).



We tried some other new convention ideas, also, and we'll be interested in your reaction to them: a spouse program with some intellectual meat in it (in addition to the traditional social stuff and tours), and a new way to judge technical papers, for those who think a "free-market" approach, expressed by *all* those who attend the technical program, is a valid way to identify quality papers!

As General Chairman, I need to report that the many committee chairpersons and all their committee workers have been terrific to work with. Without exception, they have "owned" and managed their designated tasks with skill, prudence, and imagination. They made my job a genuine pleasure, and I am proud to have been associated with them. I also want to extend special thanks to Birdena Schroeder, whose experience, capability, and willingness were simply invaluable.

After October 8, 1994, AGS members may not miss the many "extracurricular" meetings held these last two years; however, I'm sure we will all miss the fellowship brought by this convention project. The Austin community of geoscientists is clearly stronger and more cohesive as a direct result of putting on the 1994 GCAGS Convention.

Report of the Program Chairman Forty-Fourth Annual Convention—1994

Shirley P. Dutton

We have a large and exciting collection of papers that make up the technical program for the Forty-Fourth Annual Convention of the Gulf Coast Association of Geological Societies. The program will begin with the special All-Convention Symposium, *Limitations of the Earth, Revisited*, with keynote addresses by four distinguished earth scientists. A strong group of papers will then be presented in the traditional GCAGS and GCSSEPM sessions, covering topics in sequence stratigraphy, reservoir characterization, salt tectonics, organic geochemistry, sedimentology, biostratigraphy, and diagenesis. In addition, this year we will have three outstanding sessions giving a geologic perspective on environmental issues of the Gulf



Coast, including a special symposium on petroleum operations in the offshore environment, organized by G. Rogge Marsh.

As Program Chairman of the 1994 GCAGS Convention, I would particularly like to thank the colleagues who worked with me organizing the different parts of the program: Edward W. Collins, Chairman—Poster Sessions, W. Douglas Hall, Chairman—Environmental sessions, Martin B. Lagoe, Chairman—GCSSEPM sessions, and Charles M. Woodruff, Jr., Chairman—All-Convention Symposium. They all join me in conveying our special thanks to the speakers and poster

core presenters, for without you there would be no meeting.

Report of the Editor

Gulf Coast Association of Geological Societies Transactions, Vol. 44, 1994

R. P. Major

The 1994 *Gulf Coast Association of Geological Societies Transactions* are the permanent record of the largest GCAGS Technical Program ever presented in the forty-four-year history of the Association. This large program is also exceptionally diverse, covering nearly every subdiscipline of Gulf Coast geoscience research. We have papers on sequence stratigraphy, biostratigraphy, oil and gas field studies, sedimentology, sedimentary petrology, tectonic modeling, hydrology, organic geochemistry, and environmental studies. Our goal was to make this *Transactions* one of the most widely cited volumes in this series.

The heart of any major symposium volume is the authors, and I join the rest of this year's Steering Committee in thanking the hundreds of Gulf Coast geoscience professionals who contributed their time and energy to making a contribution to the *Transactions*. I have certainly learned a great deal by reading these



many diverse contributions, and so will you. I extend my thanks also to the hard-working Associate Editors, who volunteered their time to review manuscripts and apply their diverse experience and expertise to the difficult task of helping authors bring their manuscripts to completion under the very strict schedule necessary to distribute this volume at the convention. Finally, I want to thank the Publications staff of the Bureau of Economic Geology, The University of Texas at Austin, who applied their exceptional skill and experience in publication processing to the daunting task of getting this volume to the printer correct and on

time: cover and book design by Margaret L. Evans; layout and pasteup by Jamie H. Coggin; word processing and typesetting by Susan Lloyd; proofreading by Allison Faust, Jeannette Miether, and Diane Ruetz; and copyediting by Susann V. Doenges and Amanda R. Masterson.

Distinguished Service Award

Gulf Coast Association of Geological Societies

David E. Pope

Not many geologists are fortunate enough to have grown up on a well-known geological feature as did our 1994 Distinguished Service Award recipient. David E. Pope was born in Forrest City, Arkansas, near Crowley's Ridge. Upon graduating from high school, Dave entered Louisiana State University on a football scholarship. However, his education was interrupted when Uncle Sam needed his services during World War II.

During his active duty from 1942 to 1946, Dave was awarded the Silver Star twice, the Purple Heart, the Combat Infantryman's Badge, and the Atlantic, Italy, Middle East Theater Ribbon with three Campaign Stars. After his discharge, he returned to LSU and completed his B.S. in geology in 1947 and his M.S. in 1948, studying under H. V. Howe, R. J. Russell, H. N. Fisk, and C. J. Roy. He continued his military career in the U.S. Army Reserves and retired as a lieutenant colonel in 1968.

He began his career as a paleontologist with Union Producing Company in 1948. During his nineteen years with Union, Dave worked in Houston, New Orleans, and Lafayette, where he retired in 1967 as district paleontologist. He spent an additional nine years there as a consultant. In 1975, Dave became a staff member of the Louisiana Geological Survey in Baton Rouge, where he continues his geological career.

Dave has been a member of the American Association of Petroleum Geologists longer than most of us have been alive. He joined the organization in 1949 and has been involved with a number of committees. He served on the Committee for the Preservation of Cores and Samples from 1957 to 1960, and since 1988 has been involved with the Membership Committee. He has served as either the Baton Rouge delegate or alternate to the AAPG House of Delegates continuously since 1980, and he is a member of Division of Professional Affairs.

In 1949, he became one of the early members of the New Orleans Geological Society. The Society membership elected him Secretary in 1956 and Vice President in 1962, before he moved to Lafayette in 1963.

Dave attended the first GCAGS meeting in New Orleans in 1951 and most of them since then. Becoming heavily involved with GCAGS, he was elected Acting

Secretary in 1956, Vice President in 1984, and President in 1985. Our knowledge of the past history of GCAGS is due to the research which Dave, as GCAGS Historian,

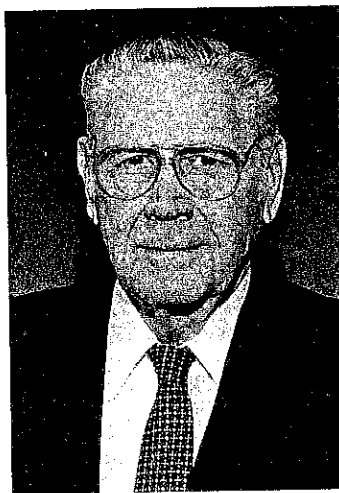
has provided from 1983 to present. His history of the Association was published in the 1991 *Transactions*, and compiled histories of member societies were published in 1993. Since 1957, he has also assisted in editing several of the *Transactions* and in organizing convention technical programs. He has not missed a GCAGS Board meeting since 1980, serving as Historian, or representing Baton Rouge Geological Society, or both. Dave served as Special Assistant and Advisor to the 1986 General Chairman, assisting in most of these duties, and will be the 1995 Convention General Chairman.

While living in Baton Rouge, Dave cofounded the BRGS in 1979 along with Harry Roland. He has served as Vice President and President, as well as on numerous committees, and has served as the Society's Newsletter Editor since 1980. He was given an Honorary Membership in 1991. Dave has also served as President of the LSU Geological Alumni Association and the LSU Museum of Geoscience Associates for several terms.

Besides being a Charter Member of the GCSSEPM in 1953, he served as its President in 1959 and was given an Honorary Membership in 1987. In 1964, he was on the Nominating Committee of the National SEPM, and was Convention Vice Chairman for SEPM at the 1965 AAPG Convention in New Orleans.

Dave has two sons (David Brian and Mark Alan) now living in Lafayette, both born while he was married to Dorothy Salario, now deceased. He has been married to Alice Duke Akins of Baton Rouge since 1990.

It's people like Dave, who have the willingness and interest in involving themselves in their professional societies, who make it possible for professionals like us to keep abreast of our industry and have a forum to present our ideas. He has made valuable contributions to every organization in which he is involved. His tenacity alone has kept the Baton Rouge Geological Society in existence, and I, for one, am thankful for what he has provided to the industry and for the appropriateness of this award.



Distinguished Service Award

Gulf Coast Section SEPM

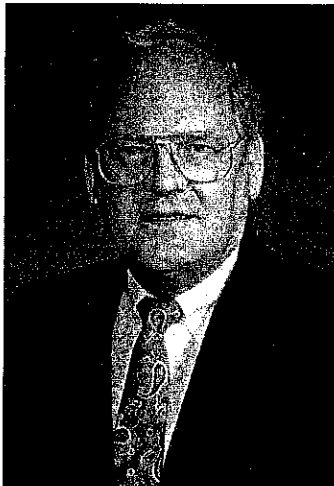
Nolan G. Shaw

Nolan G. Shaw was born in Big Spring, Howard County, Texas, on October 2, 1929, where his dad worked for Humble Oil Company. The barren rocks and landforms in some of the remote areas of western Texas, where he was raised, had an obvious influence on his career choice.

Nolan received his B.A. degree in geology from Baylor University, an M.S. degree in geology from Southern Methodist University, and a Ph.D. in geology from Louisiana State University. As an undergraduate at Baylor, he taught laboratories in introductory geology. Upon graduation, he was awarded a commission in the United States Air Force as a Second Lieutenant, requiring him to spend two years on active duty at Lackland Air Force Base in San Antonio as an Adjutant and Petroleum Officer. He attained the rank of Captain in the Air Force.

After two years in the Air Force, Nolan went to Southern Methodist University with an assistantship in geology, teaching basic geology laboratory courses. His thesis was a field study of the Benbrook Quadrangle in Tarrant County, Texas. Part of this thesis was published in a 1969 Shreveport Geological Society Field Guidebook. Nolan began his teaching career at Centenary College of Louisiana in 1955 as an Instructor in Geology. He took a two-year leave of absence to attend Louisiana State University to work toward his Ph.D. While at LSU he was awarded the Pan American Fellowship in Geology and membership in Phi Kappa Phi and the LSU Chapter of Sigma Xi. He served as an Instructor in Geology his second year at LSU. His dissertation, "*Cheilostomata* from Gulfian (Upper Cretaceous) Rocks of Southwestern Arkansas," was published in the *Journal of Paleontology* (v. 41, no. 6). Several new genera and species were identified in the study. Gilbert Larwood of the British Museum of Natural History named a new species, *Pyripora shawi*, from the Upper Cretaceous strata of Arkansas in honor of Nolan's contribution.

Nolan became Professor and Chairman of the Geology Department at Centenary College and was named the William C. Woolf Professor of Geology, a position he held until retirement, when he was named Professor Emeritus of Geology. He was awarded a Hemingway Summer Studies research grant to study Upper Cretaceous strata in southwestern Arkansas. During his thirty years at Centenary, Nolan was recognized as Outstanding Teacher



of the Year and was elected by his peers to serve on the Personnel Committee; he also served on numerous other committees and steering committees.

Nolan has been an active member of and contributor to numerous geological societies. He is a Fellow of the Geological Society of America and has been deemed a Certified Petroleum Geologist by the American Association of Petroleum Geologists and the Society of Independent Professional Earth Scientists. He is also a member of SEPM (Society for Sedimentary Geology) and the Shreveport Geological Society. As a member of the Shreveport Geological Society, he has served as President, Vice President, Program

Chairman, and Chairman of the Field Trip Committee. As a member of the Society of Independent Professional Earth Scientists he has served as Board Member and President of the Ark-La-Tex Chapter and as General Chairman and Program Chairman for the national annual meeting held in Shreveport in 1989. He served as Editor of the *Transactions* of the Twentieth Annual Meeting of the Gulf Coast Association of Geological Societies held in cooperation with the Gulf Coast Section SEPM in Shreveport in 1970 and as GCSSEPM Program Chairman for the GCAGS/GCSSEPM Twenty-Sixth Annual Convention in Shreveport in 1976. Nolan also served as Program Chairman for both the GCAGS and GCSSEPM at the Thirty-Fourth Annual Convention held in Shreveport in 1984 and as Program Chairman for the GCSSEPM at the Forty-Third Annual Convention held in Shreveport in 1993. He has also served on the School Board of Southfield School in Shreveport and as President of the Board of the Shreveport Petroleum Data Association.

Since retirement, Nolan has been active as an exploration geologists and partner of Rauch, Shaw & Laird, Inc., working in northern Louisiana and southern Arkansas. They have had success in drilling for Hosston, Rodessa, and Glen Rose reservoirs in northern Louisiana.

Nolan is married to Jane Craig Shaw, who is also a geologist. They have five children and four grandchildren.

The record clearly demonstrates Nolan's commitment to geology as evidenced by his service to the GCSSEPM, to teaching, and to other geological societies. It is fitting that he be recognized in this manner for his distinguished service to the profession and to society.

Joseph O. Laird

Past Recipients Distinguished Service Awards Gulf Coast Association of Geological Societies

R. E. Boyer (1982)	R. W. Sabaté (1990)
P. B. Sounders (1982)	C. C. Baker (1991)
B. C. Tucker (1982)	G. A. Jerry Cooley (1991)
none awarded (1983)	S. Chuber (1991)
A. T. Green, Jr. (1984)	C. R. Noll (1992)
Dewitt C. Van Sieten (1984)	J. H. Hefner (1992)
C. E. Harrison (1985)	J. G. Samuels (1992)
none awarded (1986)	T. E. Ewing (1993)
none awarded (1987)	W. R. Payne (1993)
none awarded (1988)	E. G. Wermund (1993)
H. G. Collier, Jr. (1989)	D. L. Smith (1993)
R. B. Seigert (1989)	D. E. Pope (1994)
C. J. Corona (1990)	

Past Recipients Distinguished Service Awards Gulf Coast Section SEPM

Michael J. Nault (1988)	Sheila C. Barnette (1992)
Richard P. Zingula (1988)	C. Clarence Albers (1993)
Thomas H. Fett (1989)	David T. Dockery III (1993)
Dennis Joseph Greig (1989)	Nolan G. Shaw (1994)
Bob F. Perkins (1991)	

Honorary Membership

Gulf Coast Association of Geological Societies

Thomas D. Barber

Thomas D. Barber was born in Plainview, Texas, in 1919. Tom's father was a graduate of the University of Michigan with an M.S. in agriculture and one of the first graduates in agriculture to work in the New Mexico-Texas Panhandle area. Later the family moved to Amarillo. Upon the death of his father, Tom and his mother moved to Tallulah, Louisiana, where Tom graduated from high school. Tom's desire to "get back to Texas" influenced his selection of Texas Christian University for his college education. He earned a B.A. in geology and chemistry in 1940, followed by an M.S. in geology in 1942.

Immediately after graduation Tom was employed by Dow Chemical as a chemist. Tom volunteered for service in the Navy, where he served for two years as a Lieutenant JG. Upon being discharged from the Navy, Tom went to work for Stanolind Oil and Gas, now Amoco, as a geologist. He served Stanolind in Houston, Corpus Christi, and Houston again. He progressed rapidly with Stanolind. His assignments included District Geologist in Corpus Christi, and in Houston, Assistant Division Exploration Superintendent, Division Geologist, and, finally, Assistant Exploration Superintendent. In 1959 Tom joined Michel T. Halbouty Oil and Gas Interests as Exploration Manager. Three years later he became General Manager and Vice President of Halbouty Alaska Oil Company. Upon its formation in 1981, Tom became President of Michel T. Halbouty Energy Company. In 1987 he left to form his own exploration firm. It is evident from his positions and success in these assignments that Tom is a very capable geologist.

Tom has authored numerous professional papers: "Port Acres and Port Arthur Field, Jefferson Co., Texas" was presented at the 1961 GCAGS Convention in San Antonio. Other papers include "The Responsibility of Geologists and Petroleum Engineers in Meeting the Exploration Demands of the Future," "The Practice of Petroleum Exploration in the Gulf Coast Area," and "The Exploration Enigma."

Augmenting his geological expertise is his talent as a writer and producer-director of plays and his talent for interjecting a very good sense of humor into his writings on serious geological presentations. Tom's first geological writing, "Shelder Field, Dimwitt Co., Texas"

was given in 1950 to the Corpus Christi Geological Society. It was presented in 1955 at the first GCAGS convention in New Orleans. Shelder field and Dimwitt County existed only by Tom's pen; however, this very humorous presentation was popular for more than two decades. During this period it was given at the national conventions of the American Association of Petroleum

Geologists, Society of Exploration Geophysicists, and the American Association of Petroleum Landmen. The delivery of this paper was so skillful that many in the audience did not realize that the entire content was due to Tom's wit and first-hand experience in geology.

Tom developed the plot of, produced, and directed his first one-act play, *Two Heads Are Better Than One*, a very well written, hilarious satire about Board Room decisions of an oil company. This play was first presented to the Houston Geological Society in June 1955. After many presentations it was last staged in 1992. In 1993 the Houston Geological Society Auxiliary prevailed upon Tom to write, produce,

and direct an offspring to *Two Heads . . .*, which he did under the name of *Decisions, Decisions*. This was one of the most successful meetings of Houston geologists of the season. The Houston Geological Society Auxiliary presented Tom with the "Pick and Pen" award for his success as a geologist and as a writer.

The most thought-provoking, inspirational speech ever given at a GCAGS meeting was by Tom Barber at the Houston Convention in October 1991. The title, "Power for Windmills," pointed out in a very serious but extremely humorous tone the importance of geologists in our society. Those attending that session will never forget Tom for this delivery.

Tom has always participated in geological society activities. The Houston Geological Society presented Tom with Honorary Life Membership. The American Institute of Petroleum Geologists, Texas Section, of which Tom is a Charter Member, presented him with Honorary Membership. He was Vice President of AAPG in 1978-1979 and received its Distinguished Service Award in 1985. Tom continues to be active in the AAPG, currently serving as Chairman of the Domestic Oil and Gas Resource Evaluation Committee.



Tom's personal life has been as successful as his professional life. He and his wife, Virginia, have been married for more than fifty years. They have two children, Carol Ann, an actress, writer, and film producer, and David, a Ph.D. geologist and minister. Tom is an Elder in the Presbyterian Church, and when he taught Sunday School, he did so to overflow crowds.

There are no better words to describe Tom than those written by John J. Amoruso for Tom when he received the Honorary Life Membership Award from the Houston Geological Society: "Tom is an excellent and unique geologist who besides finding oil and gas, has

kept audiences over the country mesmerized by his humorous and insightful presentations about the geological scene. Whether he is talking about far-away places in China or an oil field on the shores of the Gulf of Mexico, his message is meaningful."

It is a treasured privilege to be asked to write this tribute to Thomas D. Barber, friend, geologist, humorist, writer. Tom is well qualified to receive Honorary Membership in GCAGS, as his citation reads, "for the contribution of his philosophy, humor, and geologic expertise applied to exploring for oil and gas."

James O. Lewis

Don Freeman Tobin

Don Freeman Tobin has been selected by the Board of Directors of the Gulf Coast Association of Geological Societies to receive Honorary Membership, and the award is well deserved. He has made a lifetime commitment of dedication to family, community, and professional organizations.

A first-generation American, Don was born in Casper, Wyoming, the son of Florence Twitchell and Stephen Tobin, Wyoming sheep ranchers. He graduated from East Denver High School and from the University of Colorado in 1937 during the height of the Great Depression. Unable to get a job, he helped at the family ranch for a year, and in 1938 drove to Bartlesville to talk to the people who had turned down his written requests for work. By showing this initiative, Don was hired by Cities Service and put to work on a seismic crew in Kansas hauling jugs and laying out lines. A year later he was promoted to "Computer" rank (nothing to do with present-day machines), and shortly thereafter he became a "Geologist" and was moved to San Antonio.

Wanting to expand his academic background, Don attended St. Mary's Law School at night while working for Cities Service and received his LL.B. degree in a 1943 wartime ceremony. He subsequently served in the U.S. Army Air Corps as a ground school instructor in meteorology and navigation. Carter Oil Company employed him in 1944, and he worked on the geology of Louisiana and Mississippi until 1946, when he returned to San Antonio to work with Saltmount Royalty Company. He stayed with Saltmount Royalty until 1951, when he founded Rio Bravo Royalty Company and South Texas Gas Company. He has remained an independent oil man for the past forty-three years in San Antonio, with company offices in the historic Milam Building.



Don married Peggy Portwood of San Antonio in 1942, and they put each of their eight children through college. They now have fourteen grandchildren, whom they entertain periodically at their working 600-acre ranch on the Medina River near Bandera. They are members of St. Christopher's Episcopal Church there. Don and Peggy maintain a second home in West Cork, Ireland, and have strong ties to this ancestral area where, in 1982, they were able to buy back the old Tobin homestead where Don's father was born.

Don has been quite active in civic affairs, being a member and past president of the San Antonio Rotary Club, a Paul Harris Fellow, and 1986 Key Man of the Year for Rotary International, District 584. He was president of the San Antonio Legal Aid Association for three years, past president and an eight-year member of the San Antonio Children's Center, president for two years of the San Antonio Charro Association, and a two-year chairman of the Alamo District Science Fair. In addition he has been a member of the Board of Trustees for the Southwest Research Institute for twenty-five years.

One wonders where Don Tobin gets the time to maintain such an extensive work and family schedule, but there is even more. He has been a member of the American Association of Petroleum Geologists for fifty years, has received the Association's Distinguished Service Award, and has been a member of the Foundation since 1990. Don is currently the President of AAPG, spending most of his time for the past two years working on its behalf. Within the GCAGS, Don was Convention Chairman for the 1987 meeting in San Antonio, and made a "slam-dunk" by chairing the 1989 AAPG Annual Convention in the Alamo City. Don Tobin

truly exemplifies the statement that when you want to get a job done, go to a busy person and have no fear of the job's completion. For these efforts Don received the first special award of the GCAGS in 1988.

Notwithstanding these attributes of ambition, industry, and achievement, Don is available for comment and reflection at the South Texas Geological Society

meetings when he is in town. His blue eyes have a sparkle and alertness, and one senses his sincere concern for fellow geologists and mankind.

The GCAGS honors itself in awarding Don F. Tobin its Honorary Membership.

Stewart Chuber

Past Recipients Honorary Membership Gulf Coast Association of Geological Societies

D. R. Boyd (1982)	C. L. Sartor (1986)
J. Braunstein (1982)	J. J. Amoruso (1987)
M. T. Halbouty (1982)	W. L. Stapp (1988)
F. W. Harrison, Jr. (1982)	J. A. Gilreath (1989)
H. N. Hickey (1982)	R. E. Boyer (1990)
L. H. Meltzer (1982)	J. A. Hartman (1990)
S. J. Lysinger (1983)	T. H. Philpott (1990)
J. O. Lewis (1983)	none awarded (1991)
E. C. Roy, Jr. (1983)	none awarded (1992)
F. L. Smith, Jr. (1983)	G. A. Cooley (1993)
P. M. Strunk (1983)	M. G. Frey (1993)
R. J. LeBlanc, Sr. (1984)	P. G. Gray (1993)
W. R. Paine (1984)	J. T. Palmer (1993)
M. O. Turner (1984)	T. D. Barber (1994)
W. L. Fisher (1986)	D. F. Tobin (1994)

Honorary Membership Gulf Coast Section SEPM

Edward McFarlan, Jr.

Edward McFarlan, Jr., was born March 24, 1921, grew up in Greenwich, Connecticut, and obtained his bachelor's degree in geology at Williams College in 1943. After three years in the U.S. Naval Reserve, he earned a master's degree in geology and petroleum engineering in 1948 at the University of Texas at Austin.

His professional career began in 1948 in Houston with Humble Oil & Refining Company. During an eleven-year assignment in Humble's new Geologic Research Section under the direction of H. N. Fisk, he investigated the Mississippi Delta and the Chenier Plain of South Louisiana for modern analogs of deltaic and interdeltic reservoir sandstone bodies. Several publications resulted from these studies.

Ed was transferred to Humble's Eastern Division in New Orleans in 1959 to serve as Division Stratigrapher for an interdisciplinary team developing the regional aspects of oil and gas plays and associated prospects that later became important Louisiana onshore and offshore fields.

After a one-year operational assignment in Corpus Christi, Ed was moved in 1967 to Exxon Production Research Company, Houston, where for six years he managed the Stratigraphic Geology Division.

In 1973, Ed accepted a position on Exxon's headquarters staff in Houston. During the next thirteen years, as principal investigator he completed several major interdisciplinary regional investigations onshore and offshore from South Florida to Mexico. Many new oil and gas plays were recognized and pursued successfully by the company's operating Gulf Coast Divisions.

Upon retirement in 1986, Ed undertook personal research on the Plio-Pleistocene stratigraphic section of south and offshore Louisiana. This led to five years of geologic consulting and publications on exploration in the Plio-Pleistocene trend offshore Louisiana and Texas.

Since becoming a member of the American Association of Petroleum Geologists in 1947, Ed has given loyal and dedicated service to the Association in many ways. He became a member of the Research Committee in 1966. He served as Chairman of the Research Activities Subcommittee from 1968 to 1979 and 1981 to 1986, and as Chairman of the full committee

from 1986 to 1988. During this period, he was responsible for the initiation and/or promotion of many significant AAPG projects, including the construction of a new Tectonic Map of North America to include the concepts of plate tectonics, Correlation of Stratigraphic Units of North America (CISUNA), expansion of the Students' Grants-in-Aid Program, establishment of a data bank of North American Oil and Gas Fields, and the establishment of AAPG Research Conferences. In 1970, he recommended establishment of an annual award for achievement in petroleum geology by a member under the age of 35. This award was approved by the Executive Committee that same year.

He served as a Technical Program Committee Chairman for the annual AAPG-SEPM meetings in New Orleans (1965) and Houston (1979). He served on the Stratigraphic Correlation Committee (1970-1972), where he helped to implement the Research Committee's Stratigraphic Correlation project. Ed was appointed Cochairman of the Membership Committee (1973-1977) to help increase the number of geologists belonging to

AAPG. He was appointed to the Publication Committee (1978-1980) to enhance the marketability of research-project reports.

His desire to contribute to the local and regional geological community resulted in his serving several terms on the Executive Board of the Houston Geological Society. During his term, beginning in 1982, arrangements were made to reactivate the Continuing Education Committee with the appointment of Rudolph R. Schwartzer, who set a precedent for an outstanding series of short courses for the membership. In another area, Ed planned a new program of enlightening geology and petroleum exploration lectures presented by HGS volunteers in local high schools.

In 1987-1988, Ed was elected Vice President and Program Committee Chairman of the Houston Geological Society. High-interest monthly luncheon and dinner lectures were scheduled on important geologic developments for the membership. Through his interest in enlarging the International Explorationists Group, arrangements were made for outstanding monthly speakers and a nonvoting seat for the chairman on the



Executive Board at business meetings. To give the Society better local media coverage for our many-faceted educational and community service programs, Ed arranged to expand and fund the activities of the Public Relations Committee.

Always a participant in the annual meetings of the Gulf Coast Association of Geological Societies, Ed has presented several papers on the results of his exploration work. In 1988, he was selected as recipient of the Best Paper Award for his talk on the Pleistocene of coastal and offshore Louisiana.

Ed is a charter member of the Gulf Coast Section SEPM and, in large part due to his contributions, the annual research conferences have always been events of high interest with exploration significance. In 1981,

at the conference on shallow versus deep-water clastic sedimentation in the Gulf Basin, he was the "summarizing speaker" with a paper outlining conference results and exploration applications.

In support of SEPM's causes, he has continually been an industry spokesman for increased recognition and use of biostratigraphic interpretations of geologic time and paleoecology. For, indeed, biostratigraphic data provide basic information for interpreting eustatic cycles in sea level and changes in coastal onlap through geologic time.

Ed's devoted wife, Bettie, has been a continued and valuable mainspring of inspiration and encouragement to him throughout his career.

Robert G. Todd

Past Recipient Distinguished Honorary Membership Gulf Coast Section SEPM

Charles G. Ventress (1989)

Past Recipients Honorary Membership Gulf Coast Section SEPM

Ester Applin (1964)	Harold V. Anderson (1975)	William P. S. Ventress (1986)
Alva C. Ellisor (1964)	Lyman D. Toulmin (1975)	Don G. Bebout (1987)
Marcus A. Hanna (1964)	Doris M. Curtis (1977)	David E. Pope (1987)
Henry V. Howe (1964)	Stuart A. Levinson (1978)	Emmett Ray Adams (1989)
Hedwig T. Kniker (1964)	Fred L. Smith, Jr. (1978)	Jack O. Colle (1989)
Winnie McGamery (1964)	Charles W. Stuckey (1978)	John B. Dunlap (1989)
John R. Sandidge (1964)	William R. Paine (1980)	C. Clarence Albers (1990)
J. B. Garrett, Jr. (1965)	Frank E. Lozo, Jr. (1981)	Ben J. Petruske (1990)
E. H. Rainwater (1966)	Gene B. Martin (1984)	Ernest A. Mancini (1991)
Henry Bronislaw Stenzel (1971)	Bob F. Perkins (1984)	James M. Coleman (1992)
Jules Braunstein (1973)	Edward B. Picou, Jr. (1984)	Edward McFarlan, Jr. (1994)
Grover E. Murray (1973)	Claude M. Quigley, Jr. (1986)	

Special Commendation Award

Gulf Coast Association of Geological Societies

Austin A. Sartin

Austin Albert Sartin, coeditor of the 1993 *Gulf Coast Association of Geological Societies Transactions*, died on November 21, 1993, in Shreveport, Louisiana, at the age of 57. He was the William C. Woolf Professor of Geology and Department Chairman at Centenary College. Austin Sartin was a true gentleman, a scholar, and an inspiration to students, colleagues, and friends; his optimism was infectious, and his hope for the future, unflinching.

Austin was born in Texarkana, Texas, on April 21, 1936, and moved to Shreveport at the age of five. He was educated in the public schools of Shreveport and received his B.S. degree in geology, with honors, from Centenary College in 1959. Following service in the U.S. Army, he began his career with Texas Eastern Corporation and was asked by Professor Charles A. Hickcox to teach geology in Centenary College's Evening Division. Austin found this teaching experience so rewarding that he decided to pursue a career in college teaching. He obtained an M.S. degree in geology from the University of Arkansas and a Ph.D. in geology from Southern Methodist University, as a National Science Foundation Fellow.

Austin accepted a position as Assistant Professor of Geology at Stephen F. Austin State University in Nacogdoches, Texas, in 1970, and he began the formation of lasting professional and personal friendships with students and colleagues that made him a unique teacher, mentor, and friend. His wonderful rapport with students was demonstrated in both the development and advising of student geological organizations. Under his direction, the department became active in Southwestern Association of Student Geological Societies field trips. He guided the initiation of the Gamma Phi chapter of Sigma Gamma Epsilon (SGE) and the establishment of a student chapter of the American Association of Petroleum Geologists.

Austin also became Director of the Geology Graduate Program. While at Stephen F. Austin, he directed thirty-two geology theses, four of which won the Outstanding Thesis Award from Sigma Xi, the Scientific Research Society. Many of these theses focused on his research interests, primarily lithofacies and biofacies analysis of carbonate and terrigenous clastic depositional systems. Both his and his students' research resulted in approximately forty abstracts and articles.

In 1985, Austin accepted an endowed chair at Centenary College and was installed as the Woolf Professor of Geology and Department Chairman. He strengthened the undergraduate program, initiated a master's degree in geology, and expanded the number of

faculty, thus improving the expertise and quality of the geology programs. He directed eight geology theses at Centenary, and under his leadership, the department initiated an earth science certification program for public school teachers. Austin rejuvenated SGE and student field trip participation.

Austin Sartin was recognized in numerous ways for his service and teaching of the geological sciences. In 1978 he was elected National Vice-President for the Southeastern Province of SGE and from 1986 to 1990 served as National President. In 1991 he was named an Honorary Member of SGE, one of seventeen people to be so honored in the society's seventy-five year history. A biennial student research symposium was established in 1989 through SGE to be held in conjunction with the annual Geological Society of America convention. The winners are presented the Austin A. Sartin Research Award. Austin was elected a Fellow of the Texas Academy of Science and served as Vice-Chairman and Chairman of the Earth Science section. GSA

honored Austin by naming him a Fellow in 1991.

Austin made a significant contribution to the education and development of many students as a result of his outstanding teaching abilities. The success of his students in both industry and academia is evidence of his commitment to the profession. Austin received numerous outstanding teaching awards: the Council for Advancement and Support of Education Louisiana Professor of the Year, Centenary College's Outstanding Professor, and the Outstanding Teaching Award from the General Board of Higher Education and Ministry of the United Methodist Church.

Among professional organizations to which he devoted his time and effort were AAPG, the Gulf Coast Association of Geological Societies, the American Institute of Professional Geologists, GSA, Sigma Gamma Epsilon, SEPM (Society for Sedimentary Geology), Texas Academy of Science, Louisiana Academy of Science, Alpha Chi, National Association of Geology Teachers, Sigma Xi, and the Shreveport Geological Society.

Austin Sartin will be remembered as an outstanding teacher and true friend who had a passion for teaching and encouraging students to pursue a study of the earth sciences. His untimely death will not lessen his impact on those who crossed his path.

Austin is survived by his wife of thirty-two years, Peggy Elliott Sartin.



Mary Barrett and Patricia Sharp

Outstanding Educator Award

Gulf Coast Association of Geological Societies

William W. Craig

William W. Craig is a most worthy recipient of the Outstanding Educator Award given by the Gulf Coast Association of Geological Societies. He has demonstrated his dedication to the profession during his career as an educator at the University of New Orleans.

Bill was born April 1, 1935, in Kansas City, Missouri. He received his B.A. in 1957 and his M.A. in 1961 from the University of Missouri. From 1957 to 1959 he served in the U.S. Army as a Lieutenant, Artillery. He continued his education at The University of Texas and was granted his Ph.D. in 1968. The same year, he joined the faculty of the Earth Science Department of the University of New Orleans.

His geologic interest, as reflected by his numerous papers, is primarily in the Ordovician-Silurian section of rocks in the Ozark-Midcontinent region. In addition to his many years of field work and research in the area, he has been chairman of more than thirty master's theses, most of them involving stratigraphic and structural problems in the Ozark and Ouachita Mountains of Arkansas.

Geology has been, for many, a neglected science in our elementary and secondary schools. A major contributing factor to this situation was the lack of teacher preparation in geology. This was recognized in the New Orleans area, and a program was set in motion to correct this deficiency. Bill Craig has played a major role in preparing and conducting this program.

He has served the National Association of Geology Teachers as Louisiana Coordinator from 1989 to the present. Yearly, since 1988, he has conducted workshops for the Louisiana Science Teachers Association at their regional and annual meetings. In addition, he has led summer field trips for earth science teachers (for credit) through the Appalachians or through the Rocky Mountains. He has constructed a program for these teachers consisting of four separate three-credit courses covering the spectrum of earth sciences—namely, geology, oceanography, meteorology and climatology, and astronomy. He has taught each of these courses several

times for the teacher participants. He was instrumental in working with a group of New Orleans earth science teachers in organizing the Louisiana Earth Science Teachers Association and serves as faculty consultant for the Association.



Although Bill Craig has done outstanding work for and with earth science teachers, and they love him for it, he has not neglected his other educational duties. He has been very active in the New Orleans Geological Society, having served as chairman of a number of committees prior to and following his term as President of NOGS for 1983–1984. He received the Society's Outstanding Member Award for 1980–1987. He was made an Honorary Life Member of NOGS in 1991 and received the 1994 NOGS President's Distinguished Service Award. Under Bill's supervision, the University of New Orleans is the repository for NOGS publications and is responsible for their distribution.

Since his arrival at the University of New Orleans in 1968 Bill has been instrumental in building the then Earth Science Department from a small group to the modern Department of Geology and Geophysics. He was chosen as Chairman from 1978–1981, and again from 1990 to the present. His teaching interests are broad in scope, but his specialty in field work and laboratory analysis is stratigraphy. His training in paleontology, micropaleontology, and sedimentary environments is a valuable asset to his stratigraphy research.

Bill is an easygoing, congenial workaholic. He can be found around the Department at all times working on some project connected with the Department or a geological society. Through his earth science teachers and graduate students, Bill is so involved helping others it is difficult to see when he finds time for his own research. It seems that most everyone has found this out and, as expected, he won't turn them down.

It is a pleasure to work with a man like Bill. We thank his wife Pat for allowing us to take so much of his time. She understands. She is a lot like Bill.

Gordon Frey

1993 A. I. Levorsen Memorial Award

Awarded to: Wayne Carew

**For: 3D Seismic and Reservoir Modeling, Ram Prospect,
Viosca Knoll Block 912, Offshore Gulf of Mexico**

Wayne Carew is currently an Exploration Specialist with Imperial Oil Resources Limited in Calgary, Alberta, Canada. He received a B.Sc. (Honours) degree from Memorial University of Newfoundland in 1979 and has worked with Imperial Oil since that time. As an exploration geologist in the Western Canada Sedimentary Basin, Carew has mapped and developed prospects in both clastic and carbonate settings in Alberta and British Columbia as well as offshore Nova Scotia and in the Beaufort-Mackenzie Basin in the Canadian North.

In 1989, Carew accepted an assignment with Exxon Company USA's Offshore Production Division in New



Orleans, where he was involved in geological and geophysical mapping and development drilling of Gulf of Mexico Shelf prospects. In 1991 he became part of Exxon's deep-water Gulf of Mexico projects team and began developing interests in the applications of three-dimensional seismic mapping, particularly with respect to detailed reservoir modeling. Carew returned to Imperial Oil in early 1994 and is currently involved in production operations in the southern portion of the Alberta Basin.

Carew is a member of the American Association of Petroleum Geologists, Canadian Society of Petroleum Geologists, New Orleans Geological Society, and the Association of Professional Engineers, Geologists, and Geophysicists of Alberta.

1993 Best Paper Awards

Gulf Coast Association of Geological Societies

First place awarded to:

Wayne Carew, Paul F. Ostendorf, and Glenn L. Krum

**For: 3D Seismic and Reservoir Modeling, Ram Prospect,
Viosca Knoll Block 912, Offshore Gulf of Mexico**

Wayne Carew (see above)

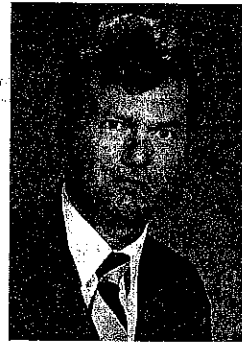
Paul F. Ostendorf is a Senior Reservoir Geophysicist with Esso Exploration and Production UK Ltd. He received a B.S. degree in geology from San Jose State University in 1978 and an M.S. degree in geology in 1981, also from San Jose State University.

Prior to Ostendorf's current assignment, he had twelve years



of petroleum industry experience as an exploration and development geologist with Exxon Company USA. This experience ranged from exploration on the North Slope of Alaska to development/exploitation geology in the Gulf of Mexico. His current assignment is developmental three-dimensional seismic interpretation of producing fields in the northern North Sea. His interests focus on statistical analysis and calibration of petrophysical well data with respect to seismic attributes in petroleum exploitation and evaluation. Ostendorf is a member of the American Association of Petroleum Geologists and the Geological Society of America.

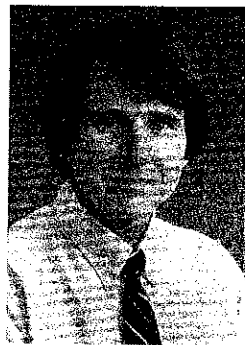
Glenn L. Krum's current interests lie in the quantitative application of three-dimensional geological modeling to reservoir characterization. He has been working in this field for eight years, first at Exxon Production Research Company and, since 1991, with Exxon Exploration Company in Houston, Texas. He joined Exxon Company USA, Minerals Division, in 1977 after graduation from the Colorado School of Mines, where he earned B.S. and M.S. degrees in mining engineering. He also has a B.A. degree in geology from the University of Colorado. His assignments with Exxon have all involved the application of quantitative computer methods to the earth sciences.



Second place awarded to: William A. Ambrose, Raymond A. Levey, José M. Vidal, Mark A. Sippel, James R. Ballard, David M. Coover, Jr., and Walter E. Bloxsom

For: Secondary Natural Gas Recovery in Mature Fluvial Sandstone Reservoirs, Frio Formation, Agua Dulce Field, South Texas

William A. Ambrose is a Research Associate at the Bureau of Economic Geology, The University of Texas at Austin. His primary areas of expertise include clastic sedimentology, depositional systems analysis, and reservoir characterization. He holds B.S. and M.A. degrees in geological sciences from The University of Texas at Austin. Ambrose joined the Bureau in 1987 and has been involved in a variety of projects, including Secondary Gas Recovery, Coalbed Methane, Reservoir Characterization, the Atlas of Major Texas Oil Reservoirs, Texas Gas and Oil Reserve Growth, and Gulf Coast Co-Production. He is currently working on a project funded by Lagoven, S.A., to optimize oil recovery of Lower Eocene reservoirs in Lagunillas field, Lake Maracaibo, Venezuela, as well as a project funded by Santos, Ltd., to characterize oil reservoirs in the Cooper Basin, Australia.



Prior to joining the Bureau, Ambrose was a geologist with the Research Planning Institute from 1984 to 1986 and was involved in regional stratigraphic studies of production trends in the South and Central Texas Gulf province. These studies resulted in detailed maps of productive intervals and identified important exploration fairways in the Wilcox Group and the Yegua and Vicksburg Formations.

Ambrose has been author or coauthor of numerous publications while employed at the Bureau, including seventeen contract reports and U.T. Bureau reports, fourteen articles, twenty-two abstracts, and twenty formal presentations at technical meetings. He is a coauthor of two 1992 papers awarded best paper by the Energy Minerals Division of the American Association of Petroleum Geologists: "Face cleat patterns in Rocky Mountain foreland basins, Western United States: permeability indicators for coalbed methane," and "Thermal maturity and coalbed methane potential of the Greater Green River, Piceance, Powder River, and Raton Basins."

Raymond A. Levey is a Research Scientist and an Associate Director at the Bureau of Economic Geology, The University of Texas at Austin. He holds a B.S. degree in geology from the State University of New York at Fredonia, and both an M.S. and a Ph.D. in geological science from the University of South Carolina.

Prior to joining the Bureau in 1990, Levey was involved in domestic exploration, production, and research, evaluating and managing developing of oil, gas, and coal resources. He spent ten



years with various subsidiaries of Shell Oil Company in Houston, Texas, including Shell Western Exploration and Production, Inc., and Shell Development Company. His domestic petroleum resource and geologic research assignments have included stratigraphic analysis of hydrocarbon reservoirs in passive margins, cratonic and rifted basins, and folded belt terrains, including the onshore and offshore Gulf of Mexico Basin, Williston and Michigan Basins, Great Basin, Western Interior Basins of Wyoming, Colorado, Utah, and New Mexico, and the Wyoming, Utah Thrust Belt region.

Levey is currently coordinating and applying his expertise in multidisciplinary approaches involving reservoir engineering, geophysics, and petrophysics to define additional natural gas resources in the Gulf Coast Basin and Midcontinent region. He is also involved in coordination of research programs investigating tight gas, coalbed methane reservoirs, and oil and gas reservoirs in the offshore Gulf Coast. He has been a co-instructor for field seminars by the American Association of Petroleum Geologists and Shell Oil Company. While at the Bureau he has developed and taught short courses and workshops for assisting exploration, production, and pipeline companies in evaluating their natural gas resources.

José M. Vidal is an Interpretation Specialist with ResTech Houston, Inc. His primary responsibilities involve petrophysical formation evaluation, project management, and integrated reservoir studies.

He attended California State University at Los Angeles, where he received his B.S. degree in electrical engineering in 1970. Prior to joining ResTech in 1990, Vidal worked for Schlumberger Wireline Services with international assignments in Latin America and Europe, where he was involved in all phases of the wireline industry, including well log interpretation, well log tool responses, and computer data processing. He has written technical papers and presented formation evaluation seminars.



His activities include petrophysical project management for the Secondary Gas Recovery project in fluvial and deltaic sandstone gas reservoirs in the Frio and Wilcox Formations on the Texas Gulf Coast with the Bureau of Economic Geology, The University of Texas at Austin. Vidal is a member of Society of Petroleum Engineers, American Association of Petroleum Geologists, Society of Professional Well Log Analysts, and Venezuela Association of Electrical and Mechanical Engineering.

Mark A. Sippel is Manager of oil and gas projects at Petrotek Engineering Corporation in Denver,



Colorado. He holds a B.S. degree in mechanical engineering from South Dakota State University and is a registered professional engineer in Colorado. His primary activities involve petroleum reservoir engineering.

He has been involved in production, exploration, and development of petroleum reservoirs with independent operators in Denver and field operations with Texaco, Inc., in West Texas. His activities have included reservoir engineering studies of gas reservoirs in the Texas Gulf Coast with the Bureau of Economic Geology, The University of Texas at Austin.

Sippel is currently principal researcher and project engineer for two U.S. Department of Energy cooperative projects with small, Denver-area independent operators. The goals of these projects are improved reservoir characterization and increased oil recovery from fluvial reservoirs in the Denver Basin and shallow-shelf carbonate reservoirs in the Williston Basin. His activities in these projects include supervision of engineering, geophysical, and geological investigations, and technology transfer.

James R. Ballard is a Project Manager for Envirocorp Services & Technology, Inc., in Houston, Texas. In that capacity he has, for the past six years, guided Envirocorp's activities as Field Operations/Industry Coordination contractor in the Secondary Natural Gas Recovery—Infield Reserve Growth Joint Venture being conducted by the Bureau of Economic Geology, The University of Texas at Austin.

Before joining Envirocorp, Ballard accumulated more than twenty-two years of engineering experience in the oil and gas industry, including service as Amoco Production Company's Regional Engineering Manager for Africa and the Middle East

and as Chief Engineer for Amoco (UK) Exploration Company in London, England. He also served as a Senior Research Engineer in Amoco's Production Research Division, specializing in planning and development of field improved recovery applications and teaching segments Amoco's Reservoir Engineering School.

Ballard holds a B.S. degree in petroleum engineering from the University of Tulsa and a Master of Management Science degree from Texas Christian University.





David M. Coover, Jr., is an attorney and businessman in Corpus Christi, Texas. He holds a B.A. in economics from St. Mary's University and a Doctor of Jurisprudence from South Texas College of Law.

Coover is President of Pintas Creek Oil Company, which is developing mineral interests in Agua Dulce field, Nueces County, South Texas.

Walter E. Bloxsom received B.S. and M.A. degrees in geology from The University of Texas at Austin. He was employed by Shell Oil and Shell Development Companies from 1963 to 1977. Since that time, he has worked as a consultant, focusing on generation of oil and gas plays in the Texas Gulf Coast, East, South, and West Texas areas.

Third place awarded to: William D. DeMis and Jeffrey V. Milliken

For: Shongaloo Field: A Recent Smackover (Jurassic) Discovery in the Arkansas-Louisiana State Line Graben

William D. DeMis is a geologist with Marathon Oil Company in Houston, Texas, and works on a worldwide basin analysis team. He received a B.S. degree in 1980 from the University of Wisconsin-Madison and an M.A. degree from The University of Texas at Austin in 1983. His graduate studies emphasized structural geology and tectonics. His master's thesis, which was supervised by W. R. Muehlberger, was on the geology of the Ouachita thrust belt exposed in the Marathon Basin of West Texas.

From 1982 through 1986, DeMis worked on the Williston Basin while employed by Pennzoil Exploration and Production Company in Denver, Colorado. His responsibilities at Pennzoil included exploitation geology of Ordovician and Devonian carbonate reservoirs and exploration geology of Mississippian carbonate stratigraphic plays.

DeMis joined Marathon in 1987, and worked on development geology of the Big Horn Basin while located in Cody, Wyoming. After being transferred to Houston in 1988, his responsibilities in domestic exploration included the Jurassic strata of North Louisiana and East Texas but primarily focused on the Smackover play of the Arkansas-Louisiana state line graben. Since being transferred to international exploration in 1992, his recent work has included studies of basins in China and New Guinea Island.

DeMis is a member of the American Association of Petroleum Geologists, the Geological Society of America, and the Houston Geological Society.



Jeffrey V. Milliken is a geologist at Marathon Oil Company in Houston, Texas. Milliken received a B.S. in geology in 1984 from Texas A&M University in College Station, Texas. While at A&M, Milliken was a summer hire with Pennzoil as a student geologist in the Onshore Gulf Coast Division. He earned an M.A. in geology from Rice University in 1988 under the direction of A. W. Bally, with a thesis concentrating on seismic interpretation of extensional pre-Jurassic structures of the northern Gulf Coast area and contractional structures in the Ouachita Mountain region. From 1988 to 1989, Milliken worked for Union Pacific Resources Company in the Gulf of Mexico exploration and exploitation groups. After a short stint with Amerada Hess, also in offshore exploitation, he joined Marathon in 1990, and spent three years working in the onshore exploration region, prospecting in Smackover carbonates in the Arkansas-Louisiana state line trend. Milliken is currently assigned to the Regional Studies and New Plays Group in the Gulf of Mexico Exploration Division. He is a member of the American Association of Petroleum Geologists, the Geological Society of America, and the Houston Geological Society. His main interests are analysis of extensional and contractional geologic systems and the application of petrophysical data to seismic data for lithology prediction.



Past Recipients Best Paper Awards and A. I. Levorsen Memorial Awards

Gulf Coast Association of Geological Societies

	First Award	Second Award	Third Award	A. I. Levorsen Award*
1959	J. E. Walters	R. L. Oakes	H. A. Bernard C. F. Major, Jr. B. S. Parrott	
1960	D. J. Hughes [†]	D. I. Andrews [†]	E. H. Rainwater [†]	
1961	R. D. Ocamb	D. I. Andrews J. C. Stipe	R. P. Fietz K. R. Scott W. E. Hayes	
1962	D. R. Tucker	R. J. Granberry R. C. Wilshusen	G. C. Glaser (tie) [‡] W. R. Walton (tie) [‡]	
1963	E. H. Rainwater	V. Peppard	S. L. Blanton, Jr.	
1964	E. H. Rainwater	D. R. Boyd B. F. Dyer	J. L. Arps	
1965	C. R. Kolb J. R. van Lopik	G. R. Kellough	Not awarded	
1966	B. J. Sloan, Jr.	W. R. Paine	R. E. Gernant R. V. Kesling	B. J. Sloan, Jr.
1967	H. Yarborough, Jr.	W. A. Price	J. Ewing (tie) J. C. Meyers (tie)	H. Yarborough, Jr.
1968	J. D. Myers	E. H. Rainwater	D. J. Hughes	J. D. Myers
1969	P. O. Roehl	J. K. Rogers	D. F. McNamee (tie) L. F. Brown (tie)	J. K. Rogers
1970	J. J. Amoruso	R. R. Berg	J. F. Harris	J. J. Amoruso
1971	H. Yarborough, Jr.	D. A. Reel (tie) G. M. Griffin B. J. Sloan (tie) J. A. Hartman (tie)	Not awarded	H. Yarborough, Jr.
1972	R. R. Berg	M. T. Halbouty	J. J. Amoruso	R. R. Berg
1973	R. D. Woods J. W. Addington	R. D. Ottman P. L. Keyes M. A. Ziegler	R. R. Berg F. L. Findley	J. M. Coleman L. D. Wright
1974	D. H. Kupfer	J. M. Coleman L. D. Wright J. N. Schyda T. Whelan	C. A. Parker	D. H. Kupfer
1975	W. L. Seal J. A. Gilreath	J. D. Myers	B. P. Baganz J. C. Horne J. C. Ferm	J. D. Myers
1976	J. D. Robinson A. R. Troell	J. W. Becher C. H. Moore A. R. Troell	N. Neel	J. D. Robinson
1977	D. K. Davies W. R. Almon	J. O. Lewis	J. O. Snowden W. B. Simmons E. B. Troughber R. W. Stephens	D. K. Davies W. R. Almon

	First Award	Second Award	Third Award	A. I. Levorsen Award*
1978	C. T. Siemers	J. W. Lund J. S. King R. E. Berlitz J. A. Gilreath	E. F. McBride	C. T. Siemers
1979	C. D. Winker	R. R. Berg	C. C. Christina K. G. Martin	R. R. Berg
1980	E. A. Mancini D. J. Benson	F. W. Harrison, Jr.	G. N. Gatenby	E. A. Mancini D. J. Benson
1981	E. C. Roy, Jr. M. Eidelbach N. Trumbly	J. L. Coleman, Jr. C. J. Coleman	G. J. Grabowski, Jr.	E. C. Roy, Jr. M. Eidelbach N. Trumbly
1982	T. E. Ewing S. C. Caran	D. J. Benson E. A. Mancini	R. R. Berg M. F. Habeck	T. E. Ewing S. C. Caran
1983	J. W. Cagle M. A. Khan	W. M. Ahr H. B. Hull, Jr.	T. E. Ewing (tie) C. H. Moore (tie)	J. W. Cagle M. A. Khan
1984	G. Kinsland	S. K. Stewart	C. L. Sartor S. R. Howard	G. Kinsland
1985	C. C. Walters M. R. Cassa	E. A. Mancini R. M. Mink B. L. Bearden	A. L. Workman J. S. Hanor	W. E. Galloway
1986	S. P. Dutton	A. H. Saller B. R. Moore	J. M. Coleman D. P. Prior H. H. Roberts	S. P. Dutton
1987	S. P. Dutton R. Finley K. Herrington	R. Evans	C. Black R. Berg	S. P. Dutton R. Finley K. Herrington
1988	M. P. Prescott	J. J. O'Brien I. Lerche	D. F. Williams I. Lerche	J. J. O'Brien I. Lerche
1989	Peter Hutchinson	N. M. Kuich	William Wade Jeffery Hanor Roger Sassen	Peter Hutchinson
1990	Michael P. Prescott	Philip L. Cook, Jr. John D. Bush John C. Marble Robert D. Schneeflock	Daniel Tearpock Harvey Pousson	Michael P. Prescott
1991	Andrew J. Davidoff	H. S. Sumner	Tom Ewing Grant Ferguson	Andrew J. Davidoff
1992	K. T. Barrow George B. Asquith Gary L. Causey	Raymond A. Levey Mark A. Sippel Robert J. Finley Richard R. Langford	J. Ulises Ricoy Joseph S. Yeh R. P. Major	Harry H. Roberts Douglas J. Cook Mark K. Sheedlo
1993	Wayne Carew Paul F. Ostendorf Glenn L. Krum	William A. Ambrose Raymond A. Levey Jose M. Vidal Mark A. Sippel James R. Ballard David M. Coover, Jr. Walter E. Bloxsom	William D. DeMis Jeffrey V. Milliken	Wayne Carew Paul F. Ostendorf Glenn L. Krum

* This award is given by the AAPG to the paper that best exemplifies creative ideas in oil and gas exploration (first award, 1966).

† 1985 through 1990 *Transactions* erroneously shown as not awarded.

‡ Glaser and Walton received First Place in the Paleontology Division for their 1962 paper.

1993 Best Poster Awards Gulf Coast Association of Geological Societies

First place awarded to: Arnold H. Bouma and
Donald A. Goddard

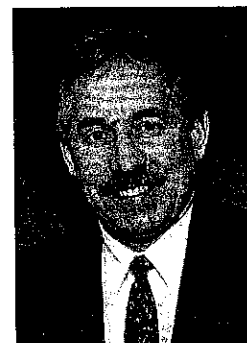
For: Recognition of Channel Fill Types in Deltas and Submarine Fans

Arnold H. Bouma is the Charles T. McCord Professor of Geology at Louisiana State University, Baton Rouge, Louisiana. He was born and educated in The Netherlands, where he received his Ph.D. in 1961 from the University of Utrecht. He spent a year at the Scripps Institute of Oceanography under a Fulbright postdoctoral fellowship. In 1966 the Bouma family immigrated to the United States. Bouma taught for ten years at Texas A&M University, worked for five years for the U.S. Geological Survey in Menlo Park, California, and Corpus Christi, Texas, and for more than seven years in industry (Gulf Oil Company, Chevron Oil Company). In 1988 he moved to Baton Rouge. Bouma has worked in both modern and ancient marine sediments from deltas to deep-sea fans.



Bouma was the recipient of the F. P. Shepard Award for Excellence in Marine Geology in 1982 and the GCAGS Outstanding Educator Award in 1992. He is a member of numerous professional associations, active in many committees, and conducts lectures for industry and scientific societies in addition to university teaching. Present activities involve ancient deltaic and submarine fan deposits in Arkansas and South Africa with students, and research on deltaic Wilcox with the Basin Research Institute, Louisiana State University. He is author or coauthor and editor or coeditor of more than 200 books, papers, abstracts, and reports.

Donald A. Goddard is Assistant Research Director of the Basin Research Institute at Louisiana State University. He received a B.S. degree in geology from Florida State University in 1965. After working for several years in Venezuela with Mene Grande Oil Company and with the Venezuelan Geological Survey, he decided to continue his education. He traveled to the United Kingdom in 1974 and received an M.Sc. degree in marine geology and geophysics in 1975 and a Ph.D. in marine geology in 1978, both from the University of London. Upon returning to Venezuela he was employed by Maraven Oil Company, where he worked as an exploration geologist on their offshore exploration campaign from 1978 until 1984. Goddard was later transferred to Maraven's production department and was involved in reservoir characterization studies in Lake Maracaibo Basin. He moved with his family to the United States in 1990 and began working with LSU's Basin Research Institute in 1991, specializing in characterization of deltaic reservoirs in central Louisiana. Goddard is a member of the American Association of Petroleum Geologists and the Venezuelan Geological Society.



Second place awarded to: Wayne Carew, Paul F. Ostendorf,
and Glenn L. Krum

**For: 3D Seismic and Reservoir Modeling, Ram Prospect, Viosca Knoll
Block 912, Offshore Gulf of Mexico**

Wayne Carew (see p. xxxi), Paul F. Ostendorf (see p. xxxi), Glenn L. Krum (see p. xxxii)

1993 Best Core Presentation Award Gulf Coast Association of Geological Societies

Awarded to: John B. Echols, Donald A. Goddard, and
Arnold H. Bouma

**For: Reservoir Characteristics of Two Minter Oil Sands Based on
Continuous Core, E-Logs and Geochemical Data: Bee Brake Field,
East Central Louisiana**

John B. Echols became Director of the Basin Research Institute at Louisiana State University, Baton Rouge, Louisiana, in June 1990. He received a B.S. degree from Millsaps College, Jackson, Mississippi, in 1959, an M.A. degree from the University of Missouri in 1961, and a Ph.D. from Louisiana State University in 1967. Echols was employed by Humble Oil and Refining Company in 1966 as a production geologist working in offshore Louisiana and onshore Florida, Alabama,



Mississippi, and Louisiana. From 1970 through 1990, Echols worked as an independent exploration-production geologist concentrating in the Paleocene-Eocene Wilcox trend of central Louisiana and southwest Mississippi.

Donald A. Goddard (*see p. xxxvii*)

Arnold H. Bouma (*see p. xxxvii*)

1993 Best Published Paper Awards Gulf Coast Section SEPM

First place awarded to: Richard L. Adams

For: Effects of Inherited Pre-Jurassic Tectonics on the U.S. Gulf Coast

Richard L. Adams is a Senior Staff Geologist for Mitchell Energy Corporation in The Woodlands, Texas. He received his B.S. in geology with honors from Indiana University at Bloomington in 1973 and his M.S. in geology from the University of Wisconsin at Madison in 1975. Both his undergraduate and Master's theses were studies of Paleozoic carbonates of the midwestern United States.

From 1975 to 1979 he worked for Exxon Company USA in New Orleans, where he handled exploration projects in the Jurassic and Cretaceous from South Arkansas to South Florida and



development projects along the Louisiana offshore. From 1979 to the present he has been employed by Mitchell Energy, where he has been responsible for exploration and development projects along the Texas Gulf Coast onshore (1979 to 1988) and the Texas and Louisiana offshore (1988 to present).

The 1993 GCAGS paper was originally prepared as a poster session for the 1989 American Association of Petroleum Geologists Convention in San Antonio.

Second place awarded to: Sylvester Q. Breard, Arden D. Callender, and Michael J. Nault

For: Paleoecologic and Biostratigraphic Models for Pleistocene through Miocene Foraminiferal Assemblages of the Gulf Coast Basin

Sylvester Q. "Skip" Breard is a native of Monroe, Louisiana. He graduated from Northwest Louisiana University with a B.S. in 1975 and an M.S. in 1978, both in geology. He was employed by Amoco Production Company in New Orleans as a Paleontologist (1979-1982), Senior Paleontologist (1982-1985), and Staff Paleontologist (1985-1989). In 1989, he joined British Petroleum Exploration in Houston, Texas, working as a Senior Biostratigrapher until 1992. From 1992 to 1993, he was a consulting paleontologist with Paleo Control in Houston. In the summer of 1993 he joined coauthors Nault and Callender in a new Houston consulting venture, Applied Biostratigraphix.



Breard is an active member of several professional societies, including SEPM (Society for Sedimentary Geology), Gulf Coast Section SEPM, North American Micropaleontology Section of SEPM, Houston Geological Society, the Paleontological Research Institute, the Cushman Foundation, and Tertiary Research Group. He served as GCSSEPM Treasurer from 1986 to 1987 and was the GCSSEPM Judging and Awards Chairman for the 1991 GCAGS Convention in Houston. He has authored and coauthored papers and abstracts on a variety of topics, including Eocene vertebrates, paleoclimate, paleoecology, and biostratigraphy.

Arden D. "Ardy" Callender, Jr., received his B.S. in 1971 and M.S. in 1977 in geology from Portland State University. He began his career in 1977 with Texaco, Inc., in Houston, Texas, as a Paleontologist (1977-1982). From 1982 to 1986 he was employed as a Senior Biostratigrapher with Sohio Petroleum/Standard Oil Production Company. In 1986 he began working as a consulting paleontologist in Houston with Paleo Control, Inc. (1986-1988). He joined British Petroleum in 1989, working as a staff biostratigrapher until 1992. During



1992-1993 he returned to Paleo Control, Inc., prior to forming a new paleontological consulting firm, Applied Biostratigraphix, in the summer of 1993.

Callender is a member of several professional societies including American Association of Petroleum Geologists, Gulf Coast Section SEPM, Houston Geological Society, Paleontological Research Institute, and the Cushman Foundation. He served as poster session chairman for the GCSSEPM Research Conference in 1987, 1990, and 1993.

Michael J. Nault, a native of New Orleans, is one-third of the micropaleontologic consulting firm of Applied Biostratigraphix in Houston, Texas. He did his B.S. (1977) and M.S. (1981) work at Northeast Louisiana University and the University of Southwestern Louisiana, respectively. Nault has worked as a research geologist for the Louisiana Geological Survey, and as a foraminiferal micropaleontologist/biostratigrapher for ARCO Oil & Gas, Tenneco Oil E&P, Chevron, BP Exploration, and PCI before forming Applied Biostratigraphix in 1993.



Nault is an active member of SEPM (Society for Sedimentary Geology), American Association of Petroleum Geologists, Houston Geological Society, Baton Rouge Geological Society, and Gulf Coast Section SEPM. He served the GCSSEPM as President in 1992, Vice President in 1983-1984 and 1989-1990, Judging and Awards Chairman in 1981 and 1983-1996, *GCAGS Transactions* Associate Editor for GCSSEPM in 1980 and GCAGS Convention Vice Chairman for GCSSEPM in 1991. At the 1988 GCAGS Convention in New Orleans, he received the first GCSSEPM Distinguished Service Award. He will serve as the SEPM Best Paper Award Committee Chairman for the 1995 AAPG Convention in Houston.

Third place awarded to: Elizabeth Chinn McDade, Roger Sassen, Lloyd M. Wenger, and Gary A. Cole

For: Identification of Organic-Rich Lower Tertiary Shales as Petroleum Source Rocks, South Louisiana

Elizabeth Chinn McDade is a geoscientist on Asset Management Team 9 in the Offshore Division at Texaco Exploration and Producing, Inc., New Orleans. She received her B.S. at Tulane University in 1980 and her M.S. at Louisiana State University in 1986. She earned a Ph.D. in geology from LSU in 1992 with a dissertation titled "Organic-Rich Lower Tertiary Shales, South Louisiana: Implications for Source Rock Deposition." Her Ph.D. research was supported in part by the Basin Research Institute of Louisiana State University, British Petroleum Exploration, Amoco Production Company, Exxon Company USA, and Platt River Associates. In 1990, McDade was the recipient of the Gus Archie Scholarship Award from the Society of Professional Well Log Analysts. She also received a grant from the Gulf Coast Association of Geological Societies in 1990 in support of her dissertation work.

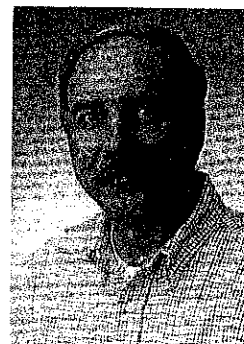


Before joining Texaco in 1991, McDade was a Research Associate at the Basin Research Institute, Louisiana State University. At BRI, her research interests centered on source rock evaluation of Smackover, Tuscaloosa, lower Tertiary, and recent sediments of the Gulf of Mexico region. She has also assisted in studies of Devonian shale of the eastern United States, the petrographic effect of carbon dioxide flooding on Berea sandstone, the effect of elemental sulfur on temperature programmed pyrolysis, and on naturally occurring petroleum seeps in the Gulf of Mexico. In addition, she has held summer positions at several oil companies: Shell Oil in 1979; Mobil Exploration and Producing, Inc., in 1985; British Petroleum Exploration in 1989; and BP Exploration (Alaska) in 1990.

At Texaco, McDade is continuing her interest in applications of petroleum geochemistry in the Gulf of Mexico region as the geochemical coordinator for the Eastern Region.

Roger Sassen, after obtaining his Ph.D. in geological sciences from Lehigh University in 1975, joined Texaco Bellaire Research Laboratory. From 1978 to 1984, he worked at Getty as a Lead Geologist and Supervisor of Geochemistry and after the merger was Supervisor of Geochemical Research for Texaco. In 1985, he joined

the Basin Research Institute of the School of Geosciences at Louisiana State University, holding the position of Director, and was an adjunct professor in the Department of Geology and Geophysics. From 1989 to 1992, he was Manager of Geochemistry and Global Consultant for British Petroleum Exploration in Houston. Sassen then joined the Geochemical and Environmental Research Group at Texas A&M University as Director of Petroleum Geochemistry.



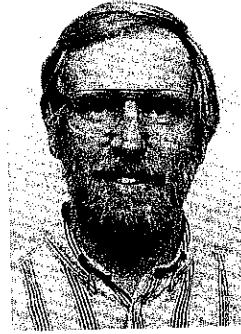
Lloyd M. Wenger is a Research Specialist (Petroleum Geochemistry) with Exxon Production Research Company, presently on loan to Exxon Exploration Company—Americas Business Unit in Houston. He is working with a multidisciplinary team aimed at understanding hydrocarbon source, maturation, and migration in the Gulf of Mexico. This assignment follows several on-shore Gulf Basin geochemical projects, which provided necessary insights into source rock to hydrocarbon correlations prior to extending the approach into the young, deep depocenters of the deep-water Gulf of Mexico.



Wenger received a B.S. in geology from Juniata College in 1977, an M.S. in geology and chemistry from Idaho State University in 1982 (thesis: "Solubility of Crude Oil and Heavy Petroleum Distillation Fractions in Methane, with Water Present, at Elevated Pressure and Temperatures as Applied to the Primary Migration of Petroleum"), and a Ph.D. in organic geochemistry from Rice University in 1987 (dissertation: "Variations in Organic Geochemistry of Anoxic-Oxic Black Shale-Carbonate Sequences in the Pennsylvanian of the Midcontinent, U.S.A."). He also did postdoctoral research at the University of Oklahoma.

Prior to commencing employment with Exxon in 1988, Wenger held positions with the U.S. Geological Survey in Denver (1980–1982) and Pennzoil Exploration and Production Company (1984–1986).

Gary A. Cole is currently a Senior Exploration Geochemist with the Laboratories Department of the Saudi Arabian Oil Company (Saudi Aramco). He has twelve years of petroleum and exploration experience, represented by ten years with SOHIO/British Petroleum Exploration and two years with Saudi Aramco. He also has five years of coal geology experience, attained prior to joining the petroleum industry in 1981. He received his B.A. and M.S. degrees in geology from Southern Illinois University. Cole has published numerous papers on petroleum geochemistry and coal geology.



Past Recipients Best Paper Awards Gulf Coast Section SEPM

	First Place	Second Place	Third Place
1993	R. L. Adams	S. Q. Breard A. D. Callender M. J. Nault	E. C. McDade R. Sassen L. M. Wenger G. A. Cole
1992*	E. G. Otvos W. E. Howat	D. W. Harrelson J. A. Saunders	W. T. Tanner
1980	A. W. Cleaves	I. L. Van Heerden H. H. Roberts	T. A. Hansen
1979	L. C. Price J. L. Clayton L. L. Rummen	C. W. Poag R. C. Tresslar	R. E. Casey L. W. Gust R. A. Reynolds D. H. Williams A. Levesley T. Duis J. M. Spaw
1978	A. Thomson	C. W. Poag	J. A. Schiebout
1977	C. D. Winker J. D. Howard	W. C. Isphording V. R. Baker	R. M. Looney
1976	C. J. Stuart C. A. Caughney	R. R. Berg R. R. Powell	C. W. Poag P. C. Valentine
1975	J. L. Wilson M. E. York	K. F. Wantland	W. C. Isphording
1974	G. M. Friedman	W. F. Tanner C. R. Berquist	R. J. Moiola D. Weiser A. B. Spencer

	First Place	Second Place	Third Place
1973	W. F. Tanner	R. J. Moiola A. B. Spencer	P. A. Thayer (tie) W. J. Cleary E. O'Donnell (tie) A. P. Wright
1972	W. F. Tanner	A. E. Weidie J. L. Wolleben E. F. McBride	P. A. Thayer D. A. Textoris
1971	R. W. Maxwell, Jr.	C. W. Poag	E. A. Shinn
1970	W. W. Hay S. W. Wise, Jr. R. D. Stieglitz	J. B. Dunlap, Jr.	W. L. Fisher C. V. Proctor, Jr. W. E. Galloway J. S. Nagle

Best Published Paper Excellence of Presentation

1991	Brian E. Lock Catherine E. Bishop	Andrew J. Pulham
1990	George C. Flowers Wayne C. Isphording	Jory A. Pacht
1989	Ron Boyd John Suter Shea Penland	Harry H. Roberts
1988	Ron Boyd Shea Penland	Edward McFarlan, Jr.
1987	Wayne Isphording Dewayne Imsand George Flowers	Rowdy Lemoine (tie) Earle McBride (tie)
1986	Douglas F. Williams Dwight M. Trainor	Robert R. Berg
1985	Paul A. Thayer Harry H. Roberts	Gordon W. Fielder
1984	M. J. Ulrich J. R. Kyle P. E. Price	M. Kontrovitz
1983	E. C. Kusters A. Bailey	D. B. Prior
1982	J. Mazzullo	C. D. Winker
1981 [†]	T. A. Daws A. V. Applegate J. C. Palacas	C. R. Handford

*Before 1981 and in 1992, awards were given for first, second, and third place.
[†]and Best Poster award to E. A. Mancini.

Officers and Committees

Forty-Fourth Annual Convention—1994

Officers

President
William L. Fisher

Vice President
William E. Marsalis

Secretary
Shirley P. Dutton

Treasurer
Carolyn Condon

General Chairman
Peter R. Rose

1994 Convention Committees

AV & Speaker's Assistance

Raymond A. Levey,
Co-Chair
Paul R. Knox, Co-Chair

Advertising

Peter A. Boone, Chair
Tim Pittman
Kimberly K. McKenna
Tracey T. Yakints

Alumni

Joyce S. Best, Chair

Arrangements & Security

Burgess H. Stengl, Chair

Assistant to

General Chairman
Elizabeth Huebner

Contributions

Robert E. Boyer, Chair
Dennis L. Bell
Dwight E. Cassell
William L. Fisher
Douglas Hall
William E. Langenbahn
H. Louis Lee
Vance M. Lynch
Peter R. Rose
Phillip E. Wyche

Crisis

Ed Garner, Co-Chair
E. G. Wermund, Co-Chair

DPA Luncheon

Ross W. Hinton, Chair
John H. Newberry
John W. Ruwwe, Jr.

Distinguished Visitors

Rizer Everett, Co-Chair
Robert W. Grayson, Co-Chair

Employment Assistance

Tom Grimshaw, Co-Chair
Perry Mann, Co-Chair

EMD Luncheon

Andrew R. Scott, Chair

Entertainment

Guy G. Cleveland, Chair
Russell Hickerson
Maira McCarthy
Anne Miller
Jimmie N. Russell

Exhibits

H. Louis Lee, Chair
Chester M. Garrett, Jr.

Field Trips

David Johns, Chair
Nico M. Hauwert
Scott E. Hiers
James W. Sansom, Jr.
Debra E. Williams

GCAGS Executive

Secretary
Birdena T. Schroeder

Housing

Douglas C. Ratcliff, Chair

Judging

Kitty Lou Milliken, Chair

Printing

Mary L. Ambrose, Co-Chair
Margaret Hart, Co-Chair

Program

Shirley P. Dutton, Chair

GCAGS

Shirley P. Dutton
Richard T. Buffler
R. P. Major
Lee E. McRae
Stephen C. Ruppel

GCSSSEPM

Martin B. Lagoe
Earle F. McBride
William E. Galloway
Thomas A. Davies

Environmental Geology

Douglas Hall

Environmental Symposium

Charles M. Woodruff, Jr.

Posters

Edward W. Collins
Kenneth T. Barrow
Paul R. Knox
Robert E. Mace

Publicity

Dwight E. Cassell, Chair
Jimmie N. Russell

Registration

Mark H. Holtz, Chair
Barbara Beynon
Susan Cisco
Chester M. Garrett, Jr.
Douglas S. Hamilton
Diane B. Hyatt
Lee E. McRae
Robert E. Mace
Edward R. Newby
Lisa E. Remington
Daria R. Ross
Scott K. Schroeder
Gary W. VanderStoep
Gerry White
Debra E. Williams
Brian J. Willis

SEPM Affairs

Earle F. McBride, Chair

Short Courses

Robert S. Kier, Chair

Sporting Events

Steven J. Seni, Chair
Golf — Steven J. Seni
Tennis — Harry Pringle

Spouse Activities

Linda Cassell, Chair
Betty Lee

Tobin Theater & Educational Seminar

Allan Standen, Chair
Linda Brown
Sigrid J. Clift
Nancy Gates
Debra E. Williams

Transactions

R. P. Major, Editor
Susann V. Doenges
Allan R. Dutton
William M. Fitchen
Douglas Hall
Tucker F. Hentz
Martin B. Lagoe
Lee E. McRae
Robert A. Morton
Hilary C. Olson
Stephen C. Ruppel
John M. Sharp
Bruce N. Turbeville
Charles M. Woodruff, Jr.

Transportation

William E. Langenbahn,
Chair
Jim Wolleben

Board of Directors

Gulf Coast Association of Geological Societies

1993–1994

President	William L. Fisher
Vice President	William E. Marsalis
Secretary	Shirley P. Dutton
Treasurer	Carolyn Condon
Past President.....	Robert L. Williamson
Finance Committee Chairman	Gerald A. Cooley

Representatives from Member Societies

Alabama Geological Society	Charles Copeland
Austin Geological Society	Guy G. Cleveland
Baton Rouge Geological Society	William E. Marsalis
Corpus Christi Geological Society.....	Sebastian Wiedmann
East Texas Geological Society.....	Presley Connie Hudson
Houston Geological Society	John M. Biancardi
Lafayette Geological Society	Jim Dungan
Mississippi Geological Society	Brian Sims
New Orleans Geological Society	Paul Jurik
Shreveport Geological Society	Joseph A. Lott
South Texas Geological Society	Barry A. Brooner
Southeastern Geological Society	John J. Hickey

Officers of Member Societies

Gulf Coast Association of Geological Societies

July 1994

Alabama Geological Society, P.O. Box 6184, University, Alabama 35486

President Dan Thompson
 Vice President Charles Smith
 Secretary Blakeney Gillett
 Treasurer David Davies

Austin Geological Society, P.O. Box 1302, Austin, Texas 78767

President Guy Cleveland
 President Elect David Johns
 Vice President Mary Ambrose
 Secretary Margaret Hart
 Treasurer Moira McCarthy

Baton Rouge Geological Society, Inc., P.O. Box 19151, University Station, Baton Rouge, Louisiana 70893

President Ronald K. Zimmerman
 Vice President/President Elect Steven N. Breakfield
 Secretary Bill Walter
 Treasurer Samuel C. Reed

Corpus Christi Geological Society, P.O. Box 1068, Corpus Christi, Texas 78403

President James Claughton
 President Elect Larry Billingsley
 Vice President Gloria Sprague
 Secretary Maggie Moorhouse
 Treasurer Wayne Sandefur

East Texas Geological Society, P.O. Box 216, Tyler, Texas 75710

President Jeff Lauman
 Vice President Nick Pollard
 Secretary-Treasurer Carl Gray

Houston Geological Society, 7171 Harwin, Suite 314, Houston, Texas 77036

President Dwight "Clint" Moore
 President Elect Ron Nelson
 Vice President Jeff Lund
 Secretary Carol Lucas
 Treasurer Jeannie Fisher Mallick

Lafayette Geological Society, P.O. Box 51896, Lafayette, Louisiana 70505
 President Brian Lock
 First Vice President Mark Rutherford
 Second Vice President Tim Rynott
 Secretary William Terrell
 Treasurer John Harrell

Mississippi Geological Society, P.O. Box 422, Jackson, Mississippi 39205
 President Neil Barnes
 First Vice President W. Les Aultman
 Second Vice President Jack Moody
 Secretary Andy Sylte
 Treasurer Mark Stephenson

New Orleans Geological Society, P.O. Box 52172, New Orleans, Louisiana 70152
 President Paul Jurik
 President Elect Mark J. Gallagher
 Vice President Irion J. Bordelon, Jr.
 Secretary Scott W. Spradley
 Treasurer Susan A. Waters

Shreveport Geological Society, P.O. Box 750, Shreveport, Louisiana 71162
 President Will Downs
 First Vice President Danny Moreland
 Second Vice President Al Jones
 Secretary Donna Walker
 Treasurer Bret Hammett

South Texas Geological Society, D-100 Petroleum Center, San Antonio, Texas 78209
 President James O. Jones
 President Elect Doug Draves
 Vice President David Oden
 Secretary Bill Layton
 Treasurer Sam Lyssy

Southeastern Geological Society, P.O. Box 1634, Tallahassee, Florida 32302
 President John J. Hickey
 Vice President Ann Tihansky
 Secretary/Treasurer Gary Maddox
 Membership Secretary Rich Deurling

1993 Executive Council Gulf Coast Section SEPM

Officers

President

Nancy L. Engelhardt Moore
Amoco Production Co.
P.O. Box 3092
Houston, TX 77253-3092
(713) 366-3389

Secretary

Michael J. Styzen
Shell Offshore, Inc.
P.O. Box 61933
New Orleans, LA 70161
(504) 588-4308

President Elect

Charles C. Smith
Geological Survey of Alabama
P.O. Box O
Tuscaloosa, AL 35486
(205) 349-2852

Treasurer

Elaine H. Collison
Mobil Oil Corporation
P.O. Box 650232
Dallas, TX 75265-0232
(214) 951-2668

Vice President

Mary (Missy) Jackson
Bureau of Economic Geology
The University of Texas at Austin
Austin, TX 78713-7508
(512) 471-7721

Past President

John M. Armentrout
Mobil Research & Development (MEPTEC)
P.O. Box 650232
Dallas, TX 75265-0232
(214) 951-2865

Foundation

Trustees

Arthur S. Waterman, Chairman
Paleo-Data, Inc.
6619 Fleur de Lis Drive
New Orleans, LA 70124
(504) 488-3711

Sheila C. Barnette
BP Exploration
P.O. Box 4587
Houston, TX 77210-4587
(713) 560-3820

Denise M. Butler
3907 Elkins Road
Sugar Land, Texas 77479
(713) 546-6357

Executive Director

Bob F. Perkins
1416 Creekford Drive
Arlington, TX 76012
(817) 265-9234

Standing Committees

Gulf Coast Association of Geological Societies

July 1994

AAPG Advisory
Howard W. Kiatta

Awards and Nominations
Bill Meaney, Chairman
Robert L. Williamson
John C. Marble
Howard W. Kiatta
Peter G. Gray

Convention
Daniel Smith, Chairman
Larry D. Bartell
Cragin Knox
Stanley King
O. Roger Berg
B. Ross White

Finance
Gerald A. Cooley, Chairman
Don R. Boyd
Matthew Daura
E. Stewart Hastings
Marvin L. Smith

Financial Aid to Students
Ralph Richardson, Chairman
Shirley P. Dutton
Brian E. Lock

Historian
David E. Pope

Long-Range Planning
C. Lane Sartor, Chairman
Robert L. Williamson
John C. Marble
Howard W. Kiatta
Peter G. Gray
Gerald A. Cooley

Publications
Robert E. Boyer, Chairman
David B. Bieler
Edward C. Roy, Jr.
William C. Ward
E. G. (Jerry) Wermund

1994 Financial Aid to Students

Gulf Coast Association of Geological Societies

During 1994 the GCAGS received twenty-nine applications for financial assistance from students enrolled in graduate and undergraduate geology programs in ten Gulf Coast colleges and universities. Grants totaling \$9,750 were awarded to thirteen successful applicants. Each of the individuals received \$750.

The Financial Aid Committee, Ralph G. Richardson (chairman), Shirley P. Dutton, and Brian E. Lock, made awards to the following students:

Doug Bowling
Michael W. Carden
Danielle L. Carpenter
Suk-Joo Choh
Laura Cutright
Cory L. Hoffman
Chris A. King
Beth Priday
Michael C. Schneider
Jennifer S. Smith
Laura B. Stewart
Sharma Tadepalli
Qiucheng (Mike) Ye

The University of Texas at Austin
Baylor University
The University of Texas at Austin
The University of Texas at Austin
The University of Texas at Austin
The University of Texas at Austin
University of Arkansas
The University of Texas at Austin
University of South Louisiana
The University of Texas at Austin
The University of Texas at Austin
University of Houston
The University of Texas at Austin

Past Officers and Convention Chairmen

Gulf Coast Association of Geological Societies

	Host City	President	Vice-President	Secretary	Treasurer	Convention Chairman
1951	New Orleans	L. Bowling	T. H. Philpott		E. M. Baysinger	
1952	Corpus Christi	W. M. Chaddick, Jr.	W. A. Gorman		T. D. Barber	
1953	Shreveport	R. T. Wade	D. D. Utterback	J. S. Spencer	K. Carter	W. J. Nugent
1954	Houston	W. R. Canada	W. H. Knight	W. A. Peterson	E. W. Kimball	
1955	Biloxi	A. E. Blanton	L. D. Traupe	F. H. Webster	C. C. Barber	R. D. Sprague
1956	San Antonio	R. L. Layden	M. W. Beckman	C. W. Holcomb	A. F. Scott	G. J. Joyce
1957	New Orleans	H. N. Hickey	P. Montgomery	R. A. Davis	K. C. Anderson	T. H. Philpott
1958	Corpus Christi	E. A. Lohse	R. W. Grayson	E. T. Musselman	W. H. Wallace, Jr.	R. C. Wilshusen
1959	Houston	G. C. Hardin, Jr.	L. Harvey	J. F. Moss	J. A. Wheeler	O. G. Bell
1960	Biloxi	M. F. Kirby	D. N. Osburn	W. W. Woolfolk	E. G. Jeffreys	A. E. Blanton
1961	San Antonio	D. Dassow	E. P. Roth	A. W. Wood	E. L. Ames	L. L. Palmer
1962	New Orleans	T. H. Philpott	J. C. Byrd	H. O. Woodbury	K. Soule	L. H. Meltzer
1963	Shreveport	J. C. Byrd	E. Knott	W. E. Bancroft	R. E. Rogers	H. J. Tyler
1964	Corpus Christi	K. Knott	R. E. Fairchild	R. W. Luker	D. A. Pedrotti	B. F. Dyer
1965	Houston	R. E. Fairchild	A. M. Borland	K. C. Harkins, Jr.	J. L. George, Jr.	E. A. Lohse
1966	Lafayette	A. M. Borland	J. H. Hensley	W. A. Robbins, Jr.	J. S. Schoelen	R. R. Copeland
1967	San Antonio	W. L. Stapp	M. D. Horton	M. L. Frazier, Sr.	L. C. Bryant	M. O. Turner
1968	Jackson	M. D. Horton	R. O. Vernon	L. G. Hughes	E. D. Minihan	L. E. Warren
1969	Miami	R. O. Vernon	H. J. Tyler	J. W. Yon, Jr.	C. W. Hendry, Jr.	H. S. Puri
1970	Shreveport	H. J. Tyler	L. H. Meltzer	C. E. Brown	B. C. Tucker	J. O. Goffe
1971	New Orleans	L. H. Meltzer	D. R. Boyd	M. L. Dwight	P. G. Gray	R. G. Williamson
1972	Corpus Christi	D. R. Boyd	F. M. Schall, Jr.	M. H. Oakes	J. E. Melton	J. M. Sides
1973	Houston	F. M. Schall, Jr.	S. J. Lysinger	M. E. Hole, Jr.	P. W. Cauthon, Jr.	C. E. Harrison
1974	Lafayette	S. J. Lysinger	W. H. Moore	T. J. Eby, Jr.	J. L. Bellamy	F. W. Harrison, Jr.
1975	Jackson	W. H. Moore	C. L. Sartor	W. E. Taylor	H. L. Ladner	C. H. Williams, Jr.
1976	Shreveport	C. L. Sartor	R. E. Boyer	J. T. Palmer	C. E. Brown	L. E. Jordan
1977	Austin	R. E. Boyer	P. G. Gray	A. E. Bell	F. L. Osborne, Jr.	E. G. Wermund, Jr.
1978	New Orleans	R. W. Stephens	E. C. Roy, Jr.	R. M. Swords	C. J. Corona	J. Braunstein
1979	San Antonio	E. C. Roy, Jr.	F. W. Harrison, Jr.	S. L. Perkins	L. C. Bryant	G. His
1980	Lafayette	F. W. Harrison, Jr.	P. M. Strunk	J. W. Shirley	R. A. Anderson	M. A. Munchrath
1981	Corpus Christi	P. M. Strunk	J. J. Amoruso	T. J. Wintermute	W. R. Payne	Wilson Humphrey
1982	Houston	J. J. Amoruso	S. C. Childress	C. G. Beckwith	C. A. Baird	J. O. Lewis
1983	Jackson	S. C. Childress	J. P. Palmer	S. A. Horton	P. D. Cate	J. C. Marble
1984	Shreveport	J. T. Palmer	E. G. Wermund	C. S. Cook	E. W. Saye	J. M. Forgotson, Jr.
1985	Austin	E. G. Wermund	D. E. Pope	R. Everett	D. C. Ratcliff	L. E. Garner
1986	Baton Rouge	D. E. Pope	R. H. Sams	B. D. David	F. E. Lindfors-Kearns	H. L. Roland
1987	San Antonio	R. H. Sams	J. A. Hartman	M. T. Tobin	T. Cooper	D. F. Tobin
1988	New Orleans	J. A. Hartman	W. R. Payne	R. W. Sabaté	J. E. Bailey	C. C. Baker
1989	Corpus Christi	W. R. Payne	P. G. Gray	B. E. Gaither	T. B. Henderson	G. M. Heinzelmann
1990	Lafayette	P. G. Gray	C. E. Harrison	H. Fielding	B. Smart	B. E. Lock
1991	Houston	C. E. Harrison	J. C. Marble	H. W. Kiatta	L. D. Bartell	D. L. Smith
						C. Noll
1992	Jackson	J. C. Marble	R. L. Williamson	W. Lester Aultman	Stanley King	S. C. Knox
1993	Shreveport	R. L. Williamson	W. L. Fisher	Mark Schroeder	B. R. White	O. R. Berg
						J. P. Wanger
1994	Austin	W. L. Fisher	W. E. Marsalis	S. P. Dutton	C. Condon	P. R. Rose

Past Officers

Gulf Coast Section SEPM

	President	Vice-President	Secretary	Treasurer
1953-1954	Stuart A. Levinson	Grover E. Murray	William H. Akers	Frank V. Stevenson
1954-1955	Charles W. Stuckey, Jr.	E. H. Rainwater	William H. Akers	Fred L. Smith, Jr.
1955-1956	E. H. Rainwater	Frank S. Westmoreland	Hugh A. Bernard	Eleanor T. Caldwell
1956-1957	Lloyd M. Pyeatt	J. O. Colle	H. Dillingman, Jr.	Eleanor T. Caldwell
1957-1958	J. O. Colle	Fred L. Smith, Jr.	Harold V. Anderson	William G. Parker
1958-1959	Marcus A. Hanna	Claude M. Quigley	Fred E. Smith	Bernard L. Hill, Jr.
1959-1960	David E. Pope	A. D. Ellis, Jr.	Gordon C. Munsey	H. A. Chun
1960-1961	Claude M. Quigley	Harold V. Anderson	E. Ann Butler	Edward Marks
1961-1962	Harold V. Anderson	Theodore D. Cook	Benjamin J. Petrusek	Albert D. Warren
1962-1963	Albert D. Warren	Ernest H. Horton	Blair S. Parrott	Henry H. Phillips
1963-1964	Lyman D. Toulmin	E. Ann Butler	Charles C. Albers	John E. Kilgore
1964-1965	Howard L. Tipsword	Benjamin J. Petrusek	D. Jeter Smith	Emmett R. Adams
1965-1966	John B. Dunlap, Jr.	John J. W. Rogers	M. Ray Bane	Charles B. Morris
1966-1967	Hubert C. Skinner	Richard P. Zingula	Gene Ross Kellough	Gene B. Martin
1967-1968	Benjamin J. Petrusek	Dan McGregor	Garrett Briggs	Herbert A. Elliot, Jr.
1968-1969	William A. Atlee	Edgar B. O'Quinn	James W. Fowler	William E. Steinkraus
1969-1970	Fred L. Smith, Jr.	Kenneth L. Loep	Robert K. Sylvester	C. Wylie Poag, Jr.
1970-1971	Jules Braunstein	Douglas E. Jones	Walter H. Trenchard	Robert N. Davids
1971-1972	William W. Hay	William E. Steinkraus	Karl J. Koenig	Gerald R. Stude
1972-1973	C. Wylie Poag, Jr.	Emmett R. Adams	Gerald R. Stude	Joan B. Strough
1973-1974	Edward B. Picou, Jr.	Walter H. Trenchard	Lawrence C. Menconi	J. Lloyd Tuttle, Jr.
1974-1975	Emmett R. Adams	Clifton A. Couture	Herbert A. Elliott, Jr.	Doris M. Curtis
1975-1976	James L. Lamb	Lawrence C. Menconi	William S. Grubb	John L. Carney
1976-1977	Clifton A. Couture	Eleanor T. Caldwell	Sherwood W. Wise, Jr.	Joseph E. Boudreaux
1977-1978	Gerald R. Stude	William P. S. Ventress	Gary R. Roberson	George C. Esker, III
1978-1979	Willard P. Leutze	Bob F. Perkins	Walter P. Kessinger	Kenneth A. Hodgkinson
1979-1980	Gene B. Martin	John L. Carney	Mary Ann Rafle	Arthur S. Waterman
1980-1981	Bob F. Perkins	Don G. Bebout	Sheila C. Barnette	Ted Karmen
1981-1982	William P. S. Ventress	Kenneth A. Hodgkinson	Brian J. O'Neill	Kurt Geitzenauer
1982-1983	John L. Carney	Ernest A. Mancini	Susan J. Conger Morris	Kevin C. Kilmartin
1983-1984	Don G. Bebout	Michael J. Nault	Susan J. Conger Morris	Nelson B. Yoder
1984-1985	Ernest A. Mancini	J. M. Crosbie	John G. McPherson	John B. Anderson
1985-1986	Susan J. Conger Morris	Arthur S. Waterman	John G. McPherson	Richard E. Constans
1986-1987	Charles L. McNulty	Denise M. Butler	Kurt G. Geitzenauer	Sylvester Q. Breard, Jr.
1987-1988	Arthur S. Waterman	Brian J. O'Neill	Ramil C. Wright	Charles G. Rosato
1988-1989	Samuel P. Miano	Charles C. Smith	Richard H. Fillon	Bethanne Breisacher
1989-1990	Sheila C. Barnette	Michael J. Nault	Nancy Engelhardt-Moore	Michael W. Center
1990-1991	Denise M. Butler	Charles C. Smith	Nancy Engelhardt-Moore	Kurt Geitzenauer
1991-1992	Michael J. Nault	Brian E. Lock	Mary (Missy) Jackson	Elaine H. Collison
1992-1993	John M. Armentrout	David W. Ford	Mary (Missy) Jackson	Elaine H. Collison
1993-1994	Nancy Engelhardt-Moore	Mary (Missy) Jackson	Michael J. Styzen	Elaine H. Collison

Bylaws

Gulf Coast Association of Geological Societies, Inc.

Part A: Organization

ARTICLE I—Name

This is a non-profit organization and shall be known as the "Gulf Coast Association of Geological Societies, Inc." It is hereinafter referred to as "This Association."

ARTICLE II—Object

The object of This Association is to provide for discussion and publication of papers on subjects and problems coming within the scope of the Geological profession and with particular emphasis on Gulf Coast geology.

ARTICLE III—Organization

This Association is an organization of AAPG-affiliated Geological Societies in the Gulf Coast area.

Section 1.

The business of This Association shall be transacted by a Board of Directors composed of one representative from each member society and the President, Vice-President, Secretary, Treasurer, and Past President. The Vice-President, Secretary, and Treasurer shall be elected by the Board of Directors at the annual meeting. At the request of the Vice-President's society, however, the Secretary and Treasurer may be elected at a prior Board meeting but they will not take office until after the annual meeting. The Secretary and Treasurer shall be non-voting members of the Board of Directors. The Secretary and Treasurer shall be nominated by the Executive Committee of the local Geological Society next in line to host the annual meeting. The Vice-President shall be nominated by the Executive Committee of the host society for the annual meeting two years hence and shall accede to the Presidency. Thus each year the President, Secretary and Treasurer will be from the host society with the Vice-President providing continuity with the Board of Directors as he assumes the Presidency in the ensuing year. The duties of these officers shall be those customary to their respective offices.

The GCAGS representative to the Advisory Council of American Association of Petroleum Geologists shall be selected by the Board of Directors of GCAGS and shall be an ex-officio, non-voting member of the GCAGS Board of Directors.

Each member society shall designate a representative to the Board of Directors and in the event the chosen representative cannot attend any given Board of Directors meeting, an alternate representative shall be appointed by the member society to attend and vote in the absence of the representative. The representative, when practicable, shall be an officer or past officer of the society he represents.

Each society shall have one vote on actions taken by the Board of Directors with the exception that the host society, the next annual host society and the immediate past host society will be entitled to two votes by virtue of their members holding the offices of President, Vice-President and Past President.

The officers of the Board of Directors shall be elected for a term of one year. They shall be elected and assume their duties as soon after the annual meeting of This Association as is practicable, except as noted in Paragraph 1 with regard to the Secretary and Treasurer. Any vacancies shall be filled by the Board of Directors as provided above in Paragraph 1.

Section 2.

The business of This Association shall be conducted by the Board of Directors. A simple majority vote of the members present at meetings is required to effect decisions, except in those matters which require a greater majority, as set forth in these Bylaws.

A quorum shall consist of more than one-half of the voting members of the Board of Directors.

The Executive Committee composed of the President, Vice-President, Secretary, Treasurer, Past President, and Finance Committee Chairman shall have the authority to transact business of an emergency nature between meetings. Any business so transacted shall be subject to ratification by the Board of Directors at its next regularly scheduled meeting. A quorum of the Executive Committee shall be three members.

ARTICLE IV—Meetings

There shall be an annual meeting of This Association, the time and place of which shall be determined by the Board of Directors. Additional meetings may be called at the discretion of the Board of Directors.

ARTICLE V—Publications

There shall be an annual *Transactions* published by This Association, which shall contain papers presented at the annual meeting, and such other material as selected by the Board of Directors. The Board of Directors is authorized to have published additional bulletins, and other material which they feel will further the object of This Association.

ARTICLE VI—Funds

The funds of This Association shall be deposited in any national bank or Federally insured Savings and Loan Association selected by the Finance Committee, to the credit of This Association, or invested in U.S. Government Bonds at the discretion of the Finance Committee.

ARTICLE VII—Amendments

Amendments to this Part A and to the Articles of Incorporation may be proposed by the Board of Directors, or by any two member societies. Proposed amendments shall be submitted to each of the member societies in writing. It shall require an affirmative vote of three-fourths of the member societies to ratify such an amendment.

ARTICLE VIII—Later Affiliation

Non-member Geological Societies in the Gulf Coast Area which are affiliated with AAPG may petition the Board of Directors for membership and shall be accepted by an affirmative vote of three-fourths of the Board of Directors.

ARTICLE IX—Resignation

Any member society may resign from This Association at any time by written notice to the Board of Directors. There shall be no obligation to transfer to such resigning society any portion of This Association's funds.

ARTICLE X—Dissolution

This Association shall terminate at such time as a majority of the member societies shall so vote. Upon dissolution all funds and other property shall be divided as mandated by the Articles of Incorporation.

Part B: Committees, Finances**ARTICLE I—Permanent Committees**

The President, with the approval of the Board of Directors, shall appoint the Annual Meeting Chairman, and the Publications Committee Chairman, appointments being for one year.

Section 1. Annual Meeting Chairman

The Annual Meeting Chairman shall direct the staging of the annual meeting, and shall have the authority to appoint such additional committees as he deems necessary.

Section 2. Publications

This committee shall be responsible for publishing all publications of This Association except the *Transactions* which fall under the purview of the Annual Meeting Chairman. Sales and storage of all GCAGS publications, including the *Transactions*, are the responsibility of this committee. The chairman shall provide annually to the Finance Committee an inventory of the GCAGS publications.

Section 3.

The President, with the approval of the Board of Directors, may appoint such additional committees as are necessary to conduct the business of This Association.

ARTICLE II—Treasurer

The Treasurer shall have the authority to issue checks against the Annual Meeting bank account of This Association on his sole signature, but in the event of his absence or incapacity to act, withdrawals or payments by checks may be made on the signature of the President during the continuance of the absence, or incapacity, of the Treasurer. In this event, the identity and authority of the President, and the circumstances relating to the absence or incapacity of the Treasurer shall be certified by the Board of Directors, if so required by the depositary. The Treasurer shall submit a financial report on the Annual Meeting at each meeting of the Board of Directors and shall keep a set of books in accordance with good accounting practices. He shall submit the books of the

Annual Meeting to the Finance Committee by March 1st following the Annual Meeting. The office of Treasurer shall be bonded as directed by the Board of Directors.

ARTICLE III—Finance Committee

The Finance Committee shall be responsible for investing and managing the funds of This Association. They shall be responsible for advancing to the Treasurer the necessary funds for operating the Annual Meeting and shall disburse funds for expenses and projects not related to the Annual Meeting as directed by the President upon approval by the Board of Directors. The Committee shall have authority to invest the funds as outlined in Article VI of Part A hereof. They shall prepare a financial report on the Association's funds and submit it at each meeting of the Board of Directors. They shall also keep an inventory of publications and equipment owned by the Association. They will keep a set of books in accordance with good accounting practices and will submit the books for auditing as requested by the Board of Directors. The Committee will oversee the preparation and submittal of the Association's Annual Income Tax Return. The Committee will also keep a file of these financial reports, as well as the report of the Treasurer for each Annual Meeting, for access by officers and representatives of the annual meetings for future years. The Committee shall consist of five members serving staggered three-year terms, such that each year one to three members will complete their terms and one to three new members will be appointed. The President of the Association, with the approval of the Board of Directors, shall appoint the members of the Finance Committee and select its chairman. Members of the Finance Committee shall be bonded as directed by the Board of Directors. All checks of greater than \$1,000 shall be signed by two of the Finance Committee members.

ARTICLE IV—Amendments

This Part B may be amended by an affirmative vote of three-fourths of the Board of Directors.

ARTICLE V—Dues

There shall be no dues.

Bylaws

Gulf Coast Section of the Society of Economic Paleontologists and Mineralogists

ARTICLE 1—Object

1.01 - The object of the Gulf Coast Section of the Society of Economic Paleontologists and Mineralogists is to promote the science of stratigraphy in the Gulf Coast states through research in paleontology and sedimentary petrology, especially as it relates to petroleum geology. The Corporation, herein referred to as the "Section," will be closely associated with the Gulf Coast Association of Geological Societies and will cooperate with it and with the local geological societies of which it is composed for the furtherance of mutual objectives.

ARTICLE 2—Members

2.01 - The Section shall have members, associate members, charter members, and honorary members.

2.02 - Members shall be persons engaged in paleontologic, petrographic or stratigraphic studies that have application to the geology of petroleum, who are members or associate members of the Society of Economic Paleontologists and Mineralogists and who work or reside in the Gulf Coast province of the states of Texas, Louisiana, Mississippi, Alabama, Georgia, or Florida, or whose interest or work is principally within these states. Membership, once obtained, shall not be dependent upon continued residence in the aforementioned states.

2.03 - Associate members shall be persons engaged in paleontologic, petrographic or stratigraphic studies that have application to the geology of petroleum, who work or reside in the Gulf Coast province of the above mentioned states, and who are not members or associate members of the Society of Economic Paleontologists and Mineralogists. Associates shall enjoy all the privileges of membership, save that they shall not hold office. Election to membership in the Society of Economic Paleontologists and Mineralogists will automatically advance associates to members.

2.04 - Charter members are those whose applications for membership were received before the first nomination of officers. They shall enjoy all the privileges of members, and, hereinafter, are included in all references to "members."

2.05 - The Council may elect as honorary members persons who have contributed distinguished service to the science of stratigraphy, paleontology or sedimentary petrology, especially as they relate to petroleum geology in the Gulf Coast. Honorary members shall not be required to pay dues.

2.06 - Each candidate for membership shall submit to the Secretary an application on a form authorized by the Council for this purpose.

2.07 - New members and associates enrolled after September 15 shall be considered as having paid their dues for the next calendar year.

ARTICLE 3—Council and Officers

3.01 - Executive authority of the Section is vested in a board of directors known as the "Council" consisting of six members who are duly elected by the members, as follows: President, President-Elect, Vice President, Secretary, Treasurer, and the most recently retired Past President.

3.02 - The President shall discharge the usual duties of a president, as well as act as presiding officer at all meetings of the Section and Council. He shall appoint an Editor, Program Chairman, Committee Chairmen and Business Representatives.

3.03 - The Vice President shall assume the duties of the President in the case of the absence or disability of the latter. He shall also be Chairman of the Membership Committee and Chairman of the Employment Counseling Committee.

3.04 - The Secretary shall keep the records of the proceedings of the Section and a complete list of the membership. He shall attend to the preparation and mailing of notices, membership application blanks and other materials necessary to the business of the Section.

3.05 - The Treasurer shall have custody of all funds of the Section. He shall keep account of the receipts and disbursements, and submit his account to the membership at the end of each year.

3.06 - The Council shall consider all candidates for membership and pass on the qualifications of the applicants; shall have control and management of the affairs and funds of the Section; shall designate the time and place of the Annual Meeting.

3.07 - The President and Vice President shall not serve for more than one (1) year, except that if the Vice President succeeds to the position of Acting President, he may be elected to a full term as President.

3.08 - In the event that neither the President nor Vice President is available to serve as presiding officer of the Section, the immediate Past President shall assume the President's duties.

3.09 - The President-Elect shall serve for one (1) year as such, and in the following year he shall assume the office of President. He shall not have administrative authority except as a member of the Council. He shall acquaint himself with all the details of the office of President and generally prepare himself to serve as President. He shall be responsible for the preparation of the annual meeting for the ensuing year.

3.10 - A vacancy occurring in the offices of Vice President, Secretary or Treasurer shall be filled by Council appointment.

3.11 - A vacancy occurring in the office of President-Elect shall be filled by mail ballot by the membership through a special election called by the Council.

3.12 - The Secretary and Treasurer shall serve for a term of two (2) years. These offices shall be renewable through election.

ARTICLE 4—Meetings of Members

4.01 - The Section shall hold at least one stated meeting each year, which shall be known as the Annual Meeting. This meeting will usually be held in conjunction with the Annual Meeting of the Gulf Coast Association of Geological Societies.

4.02 - The program for the Annual Meeting shall be arranged by the Program Chairman in conjunction with the Chairman designated by the Gulf Coast Association of Geological Societies to arrange for its own program. In general, it will be desirable that the contributions from members of the Section be included in the main program rather than being allotted to a separate session.

4.03 - At the time of the Annual Meeting, a Business Meeting shall be held for the transaction of Section business.

ARTICLE 5—Amendment of Bylaws

5.01 - These Bylaws may be amended by two-thirds vote of returned mail ballots received by the Secretary sixty (60) days after proposal of amendments with provision for vote is mailed to the members. Any proposed amendments must have the approval of a majority of the Council before being submitted to the members.

5.02 - A petition containing the signatures of twenty (20) active members is considered sufficient to bring before the Council a proposed change in the Bylaws. A majority vote of Council is also considered sufficient to initiate a proposed change.

ARTICLE 6—Dues

6.01 - This fiscal year of the Section shall commence on October 1 and expire on September 30 of the following year.

6.02 - The annual dues of the members and associates of the Section shall be eight dollars (\$8.00). Penalty of fifty cents (\$0.50) shall be assessed for late payments. The fifty cents (\$0.50) late penalty shall be waived upon payment of dues for two more years.

6.03 - A bill for dues shall be mailed to each member and associate before January 1 of each year. Members and associates who have not paid their annual dues by April 1 shall be dropped from the membership rolls.

6.04 - Members and associates dropped for non-payment of dues may apply to the Council for reinstatement and be reinstated by majority vote of the Council.

6.05 - Members and associates may, at their discretion, pay their annual dues in advance for periods of up to five (5) years.

ARTICLE 7—Financial Procedure

7.01 - No officer or member shall enter into contract or disburse any of the Section's funds, without the co-signature of a member of the Council. Disbursal of a sum in excess of Five Hundred Dollars (\$500.00) must be approved by a majority of the Council.

ARTICLE 8—Elections

8.01 - The President shall appoint two (2) nominating committees, instructing each committee to submit nominations for President-Elect, Vice President, Secretary, and Treasurer. These nominations shall be in the Secretary's hands before July 15. If desired, the same person may be nominated by the two committees for the offices of Secretary and Treasurer, but the nominations for President-Elect and Vice President shall not include the name of the same person on the two slates. The nominations of the first committee to file its report will have precedence in case of overlapping nominations, and the other committee shall then be requested to change its nominations. A candidate of office must be an active member and reside in the Gulf Coast at the time of his nomination.

8.02 - Ballots containing the nominations for officers, arranged alphabetically under each office, shall be prepared by the Secretary and mailed to each member of the Section on or before July 15. The ballots received by the Secretary before September 15 shall be counted by him. Receipt of a plurality of the votes cast for any office shall constitute election. In case of a tie vote, members of the Council shall cast one additional deciding vote.

8.03 - Results of balloting shall be announced at the Annual Meeting each October and the new officers shall enter upon duty on January 1 of the next calendar year.

ARTICLE 9—Publications

9.01 - The Section Editor, appointed by the President, shall actively solicit papers from the Section membership for presentation at the Annual Meeting. He shall cooperate with the editor of the Gulf Coast Association of Geological Societies' Transactions volume in preparing papers delivered at the meeting for publication in the volume. He shall cooperate with the editors of the Society of Paleontologists and Mineralogists' journals by helping to arrange for publications in these periodicals of suitable papers which come to his attention.

9.02 - Members of the Section may purchase one copy of each Section publication at a discount rate of 20 percent off the advertised price.

ARTICLE 10—Business Representatives

10.1 - The President shall appoint one representative from each group of members in each local geological society affiliated with the Gulf Coast Association of Geological Societies and in other localities as needed. Each representative shall have an up-to-date list of the members residing in his vicinity. He will notify these members concerning any matter of Section policy which may be relayed to him by the

President and shall have the authority to convene a meeting of those members to determine their views concerning Section affairs. He will report the results of such meetings to the President of the Section. He will cooperate with the Section Editor in the soliciting of papers to be presented at the Annual Meeting and with the Chairman of the Membership Committee in recruiting new members for the Section.

ARTICLE 11—Audit

11.01 - The President shall appoint an Auditing Committee which shall review the accounts presented by the Treasurer. The approval of the Treasurer's books by the committee shall

be required before his final report will be accepted. The Treasurer shall submit a provisional report at the Annual Meeting, and his final audit shall be accomplished no later than 30 days thereafter.

The Constitution of the GCS/SEPM was originally adopted in 1954 and was amended in 1960, 1962, 1966, 1969, 1971, 1972, 1974, and 1981. The Section was incorporated under the laws of the State of Texas in 1981, and these Bylaws were adopted at that time in place of the original Constitution and its amendments. They were amended in 1984, 1990, and 1991. These Bylaws embody all of the provisions of the original Constitution and its amendments.

Call for Papers and Posters

1995

Gulf Coast Association of Geological Societies
and the
Gulf Coast Section of SEPM

45th Annual Convention
Baton Rouge, Louisiana
October 25-27, 1995

Hosted by the Baton Rouge Geological Society



The meeting theme, "Gulf Coast Geology - A Global Resource," will be highlighted in presentations that include technology transfer from the Gulf of Mexico to the international scene and the utilization of hydrocarbon technology in environmental applications. Three main topic areas will be emphasized: Energy, Water, and the Environment. Each main topic will be subdivided into Technology Transfer, Case Studies, New Concepts, and Business and Economic Aspects.

A special session for student presentations will be organized and separate awards will be given. These contributions will be published in the *Transactions*.

There will be three main types of presentations:

- **Oral Presentations** - a manuscript will be required for publication in the *Transactions*.
- **Poster Presentations** - will be published in the *Transactions* as full papers or as extended abstracts with the option of a limited number of illustrations.
- **Core Presentations** - will be published in the *Transactions* as papers or as extended abstracts including a limited number of illustrations. The display of cores with features of sedimentological interest and/or distinctive reservoir characteristics is encouraged.

Papers should be prepared in accordance with guidelines that will be sent to those submitting abstracts.

Submit all abstracts by January 17, 1995 to:

Arnold H. Bouma, Program Chairman
1995 GCAGS Convention
Dept of Geology and Geophysics, Louisiana State University
Baton Rouge, LA 70803-4101
Telephone: (504) 388-6186 FAX: (504) 388-2302

Notification of acceptance will be by **February 17, 1995**.
Complete manuscripts will be due by **April 20, 1995**.

William E. Marsalis
President, 1994-95

Arnold H. Bouma
Program Chairman, GCAGS

Harry H. Roberts
Program Chairman, GCSSEPM

David E. Pope
General Chairman

Bobby L. Jones
Vice Chairman, GCAGS

Harry H. Roberts
Vice Chairman, GCSSEPM

